

# 8. Primate Evolution

Jonathan M. G. Perry, Ph.D., The Johns Hopkins University School of Medicine

Stephanie L. Canington, B.A., The Johns Hopkins University School of Medicine

## Learning Objectives

- Understand the major trends in primate evolution from the origin of primates to the origin of our own species
- Learn about primate adaptations and how they characterize major primate groups
- Discuss the kinds of evidence that anthropologists use to find out how extinct primates are related to each other and to living primates
- Recognize how the changing geography and climate of Earth have influenced where and when primates have thrived or gone extinct

The first fifty million years of primate evolution was a series of adaptive **radiations** leading to the diversification of the earliest lemurs, monkeys, and apes. The primate story begins in the canopy and understory of conifer-dominated forests, with our small, furtive ancestors subsisting at night, beneath the notice of day-active dinosaurs.

From the archaic **plesiadapiforms** (archaic primates) to the earliest groups of true primates (**euprimates**), the origin of our own order is characterized by the struggle for new food sources and microhabitats in the arboreal setting. Climate change forced major extinctions as the northern continents became increasingly dry, cold, and seasonal and as tropical rainforests gave way to deciduous forests, woodlands, and eventually grasslands. Lemurs, lorises, and tarsiers—once diverse groups containing many species—became rare, except for lemurs in Madagascar where there were no anthropoid competitors and perhaps few predators. Meanwhile, **anthropoids** (monkeys and apes) emerged in the **Old World**, then dispersed across parts of the northern hemisphere, Africa, and ultimately South America. Meanwhile, the movement of continents, shifting sea levels, and changing patterns of rainfall and vegetation contributed to the developing landscape of primate biogeography, morphology, and behavior. Today's primates provide modest reminders of the past diversity and remarkable adaptations of their extinct relatives. This chapter explores the major trends in primate evolution from the origin of the Order Primates to the beginnings of our own lineage, providing a window into these stories from our ancient past.

## HOW TO DIAGNOSE A PRIMATE

When you examine the skeleton of a mammal, how do you know if you are looking at a primate? Some physical traits are useful in the **diagnosis** of primates and have been used to make decisions about which living and fossil mammals belong in our definition of the Order Primates. However, primates are hard to diagnose. There is no obvious diagnostic trait of our own order. From the first modern attempts to classify primates, scientists have struggled to come up with traits that

are possessed exclusively and universally by primates. In the end, most have generated lists of traits that are of variable utility in making a correct diagnosis.

In the 19th century, British naturalist St. George Jackson Mivart articulated the most famous diagnosis of the Order Primates. This “primate pattern” is a list of the following traits: nails, clavicles, placentation, orbits encircled by bone, three tooth types (i.e., incisors, canines, premolars/molars), posterior lobe of the brain, calcarine fissure of the brain, opposable thumb and/or big toe, nail on the big toe, well-developed cecum, pendulous penis, testes within a scrotum, and two nipples in the pectoral region. Many primatologists have pointed out that no single feature on this list is unique to primates. Also, nails appear twice. Taken together, perhaps it is a useful list. Unfortunately, some of these traits (e.g., three types of teeth) are neither clear nor true of all primates. Other traits, like nipple number and location, are quite variable among primates. Still others, for example the pendulousness of the penis, can be assessed in only males.

Modifications of this approach by subsequent scientists have included lists of trends, like that suggested by Le Gros Clark. Clark’s trends emphasize the flexibility and generalized nature of the limbs, mobility and dexterity of the digits, reduction of the snout with elaboration of the visual system, retention of simple teeth, and elaboration of the brain with prolonged period of juvenile dependence. Later, Robert D. Martin emphasized distinctive reproductive characteristics of primates, along with details of cranial anatomy and grasping extremities (Martin 1968, 1990).

Most modern workers have focused on the grasping extremities and flattened nails, as well as branching of the carotid artery supply to the brain and of the formation of the auditory bulla of the cranium. In extant primates, the brain receives its blood supply via two principal routes (one pathway to the back of the brain and one toward the front). For all taxa, the paired vertebral arteries provide most of the blood to the back of the brain. Blood supply to the front, however, is more complex and involves branches of the internal carotid artery (ICA) and external carotid artery (ECA). For haplorhines (tarsiers, **catarrhines**, and **platyrrhines**), the main artery to the front of the brain is a branch of the ICA called the promontory artery (though most human gross anatomy textbooks simply refer to it as the internal carotid artery). In most lemuriforms, this is the job of a second branch of the ICA known as the stapedia artery (which tends to be absent in adult haplorhines). Finally, in loriformes and cheirogaleid lemuriformes, the front of the brain is supplied by the ascending pharyngeal artery (a branch of the ECA). These differences provide a valuable method for reconstructing phylogenetic relationships between fossil primates and living taxa.

In all extant primates, the auditory bulla is ossified and is formed by an extension of the petrous part of the temporal bone (or, more simply, petrosal bone). This last trait, a petrosal bulla, is perhaps the best candidate for a universally applicable diagnostic trait of primates. Unfortunately, it is often extremely difficult to assess in an adult cranium and perhaps even more difficult to assess in a fossil that has various cracks and deformities associated with preservation and preparation.

Although taxonomists crave neat and complete lists of traits to aid in sorting animals into bins, the true definition of a phylogenetic group is always one of descent from a common ancestor. The Order Primates is made up of all of the descendants of some common ancestor in the remote past. This last common ancestor probably did not possess all of the traits common to primates today and might have been indistinguishable from other primitive placental mammals living in the Cretaceous Period.

## MAJOR HYPOTHESES ABOUT PRIMATE ORIGINS

For many groups of mammals, there is a key feature that led to their success. A good example is powered flight in bats. Primates lack a feature like this. Instead, if there is something unique about primates, it is probably a group of features rather than one single thing. Because of this, anthropologists and paleontologists struggle to describe an ecological

scenario that could explain the rise and success of our own order. Three major hypotheses have been advanced to explain the origin of primates and to explain what makes our own order unique among mammals (Figure 8.1); these are described below.

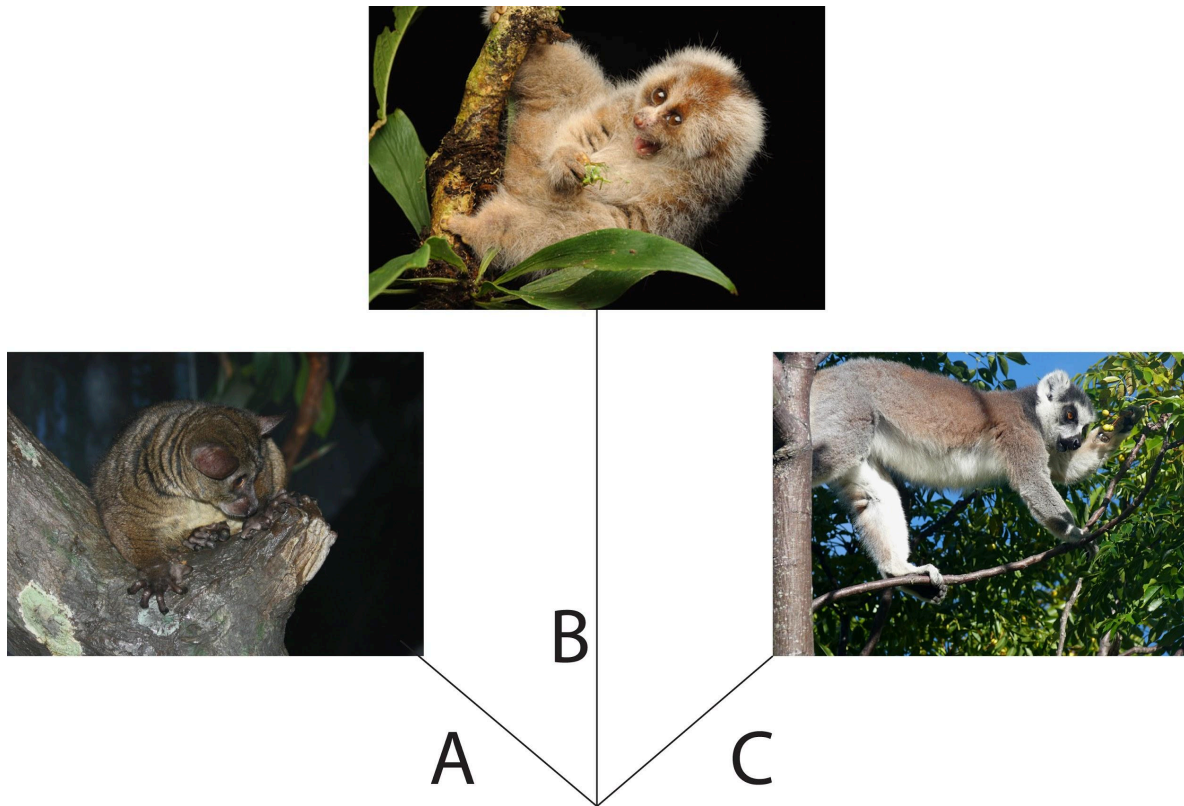


Figure 8.1 Three major hypotheses are A) the arboreal hypothesis, B) the visual predation hypothesis, and C) the angiosperm-primate coevolution hypothesis.

## Arboreal Hypothesis

In the 1800s, many anthropologists viewed all animals in relation to humans. That is, animals that were more like humans were considered to be more “advanced” and those lacking humanlike features were considered more “primitive.” This way of thinking was particularly obvious in studies of primates.

Thus, when anthropologists sought features that separate primates from other mammals, they focused on features that were least developed in lemurs and lorises, more developed in monkeys, and most developed in apes (Figure 8.2). Frederic Wood Jones, one of the leading anatomist-anthropologists of the early 1900s, is usually credited with the Arboreal Hypothesis of primate origins (Jones 1916). This hypothesis holds that many of the features of primates evolved to improve locomotion in the trees. For example, the grasping hands and feet of primates are well suited to gripping tree branches of various sizes and our flexible joints are good for reorienting the extremities in many different ways. A mentor of Jones, Grafton Elliot Smith, had suggested that the reduced olfactory system, acute vision, and forward-facing eyes of primates are an adaptation to making accurate leaps and bounds through a complex, three-dimensional canopy (Smith 1912). The forward orientation of the eyes in primates causes the visual fields to overlap, enhancing depth perception, especially at close range. Evidence to support this hypothesis includes the facts that many extant primates are arboreal, and the primitive members of most primate groups are dedicated arborealists. The Arboreal Hypothesis was well accepted by most anthropologists at the time and for decades afterward.

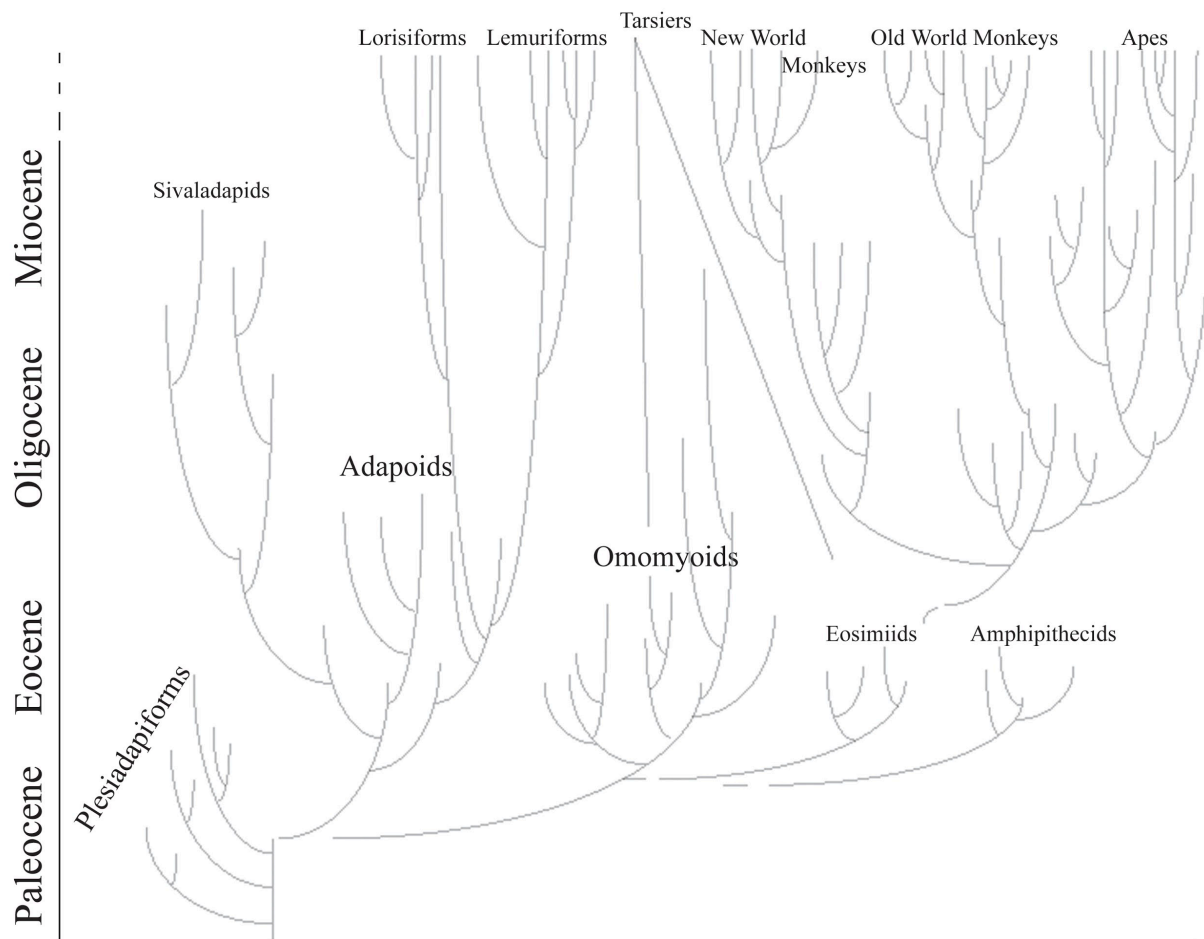


Figure 8.2. Primate family tree showing major groups. Disconnected lines show uncertainty about relationships. Note two lines leading to tarsiers from different possible groups of origin. The timescale is shortened for the epochs since the Miocene.

## Visual Predation Hypothesis

In the late 1960s and early 1970s, Matt Cartmill studied and tested the idea that the characteristic features of primates evolved in the context of arboreal locomotion. Cartmill noted that squirrels climb trees (and even vertical walls) very effectively, even though they lack some of the key adaptations of primates. As members of the Order Rodentia, squirrels also lack the hand and foot anatomy of primates. They have claws instead of flattened nails and their eyes face more laterally than those of primates. Cartmill reasoned that there must be some other explanation for the unique traits of primates. He noted that some non-arboreal animals share at least some of these traits with primates; for example, cats and predatory birds have forward-facing eyes that enable visual field overlap. Cartmill suggested that the unique suite of features in primates is an adaptation to detecting insect prey and guiding the hands (or feet) to catch insects (Cartmill 1972). His hypothesis emphasizes the primary role of vision in prey detection and capture; it is explicitly comparative, relying on form function relationships in other mammals and nonmammalian vertebrates. According to Cartmill, many of the key features of primates evolved for preying on insects in this special manner (Cartmill 1974).



## Angiosperm-Primate Coevolution Hypothesis

The visual predation hypothesis was unpopular with some anthropologists. One reason for this is that many primates today are not especially predatory. Another is that, whereas primates do seem well adapted to moving around in the smallest, terminal branches of trees, insects are not necessarily easier to find there. A counterargument to the visual predation hypothesis is the angiosperm-primate coevolution hypothesis. Primate ecologist Robert Sussman (Sussman 1991) argued that the few primates that eat mostly insects often catch their prey on the ground rather than in the fine branches of trees. Furthermore, predatory primates often use their ears more than their eyes to detect prey. Finally, most early primate fossils show signs of having been omnivorous rather than insectivorous. Instead, he argued, the earliest primates were probably seeking fruit. Fruit (and flowers) of angiosperms (flowering plants) often develop in the terminal branches. Therefore, any mammal trying to access those fruits must possess anatomical traits that allow them to maintain their hold on thin branches and avoid falling while reaching for the fruits. Primates likely evolved their distinctive visual traits and extremities in the Paleocene (approximately 65 million to 54 million years ago) and Eocene (approximately 54 million to 34 million years ago) epochs, just when angiosperms were going through a revolution of their own—the evolution of large, fleshy fruit that would have been attractive to a small arboreal mammal. Sussman argued that, just as primates were evolving anatomical traits that made them more efficient fruit foragers, angiosperms were also evolving fruit that would be more attractive to primates to promote better seed dispersal. This mutually beneficial relationship between the angiosperms and the primates was termed “coevolution” or more specifically “**diffuse coevolution**.”

At about the same time, D. Tab Rasmussen noted several parallel traits in primates and the South American woolly opossum, *Caluromys*. He argued that early primates were probably foraging on both fruits and insects (Rasmussen 1990). As is true of *Caluromys* today, early primates probably foraged for fruits in the terminal branches of angiosperms, and they probably used their visual sense to aid in catching insects. Insects are also attracted to fruit (and flowers), so these insects represent a convenient opportunity for a primarily fruit-eating primate to gather protein. This solution is, in effect, a compromise between the visual predation hypothesis and the angiosperm-primate coevolution hypothesis. It is worth noting that other models of primate origins have been proposed, and these include the possibility that no single ecological scenario can account for the origin of primates.

## THE ORIGIN OF PRIMATES

### Paleocene: Mammals in the Wake of Dinosaur Extinctions

Placental mammals, including primates, originated in the Mesozoic Era (approximately 251 million to 65.5 million years ago), the Age of Dinosaurs. During this time, most placental mammals were small, probably nocturnal, and probably avoided predators via camouflage and slow, quiet movement. It has been suggested that the success and diversity of the dinosaurs constituted a kind of ecological barrier to Mesozoic mammals. The extinction of the dinosaurs (and many other organisms) at the end of the Cretaceous Period (approximately 145.5–65.5 million years ago) might have opened up these ecological niches, leading to the increased diversity and disparity in mammals of the Tertiary Period (approximately 65.5–2.5 million years ago).

The Paleocene was the first epoch in the Age of Mammals. Soon after the Cretaceous-Tertiary (K-T) extinction event, new groups of placental mammals appear in the fossil record. Many of these groups achieved a broad range of sizes and lifestyles as well as a great number of species before declining sometime in the Eocene (or soon thereafter). These

groups were ultimately replaced by the modern orders of placental mammals (Figure 8.3). It is unknown whether these replacements occurred gradually, for example by competitive exclusion, or rapidly, perhaps by sudden geographic dispersals with replacement. In some senses, the Paleocene might have been a time of recovery from the extinction event; it was cooler and more seasonal globally than the subsequent Eocene.



Figure 8.3 Depiction of Eocene flora and fauna in North America.

## Plesiadapiforms, the Archaic Primates

The Paleocene epoch saw the emergence of several families of mammals that have been implicated in the origin of primates. These are the plesiadapiforms. Plesiadapiforms are archaic primates, meaning that they possessed some primate features and lacked others. The word *plesiadapiform* means “almost adapiform,” a reference to some similarities between some plesiadapiforms and some adapiforms (or adapoids; later-appearing true primates)—mainly in the molar teeth. Because enamel fossilizes better than other parts of the body, the molar teeth are the parts most often found and first discovered for any new species. Thus, dental similarities were often the first to be noticed by early mammalian paleontologists, partly explaining why plesiadapiforms were thought to be primates. Major morphological differences between plesiadapiforms and euprimates (true primates) were observed later when more parts of plesiadapiform skeletons were discovered. Many plesiadapiforms have unusual anterior teeth and most have digits possessing claws rather than nails. So far, no plesiadapiform ever discovered has a postorbital bar (seen in extant strepsirrhines) or septum (as seen in **haplorhines**), and whether or not the **auditory bulla** was formed by the **petrous bone** remains unclear for many plesiadapiform specimens. Nevertheless, there are compelling reasons (partly from new skeletal material) for including plesiadapiforms within the Order Primates.

## Geographic and Temporal Distribution

*Purgatorius* is generally considered to be the earliest primate. This Paleocene mammal is known from teeth that are very

primitive for a primate. It has some characteristics that suggest it is a basal plesiadapiform, but there is very little to link it specifically with euprimates (see Clemens 2004). Its ankle bones suggest a high degree of mobility, signaling an arboreal lifestyle (Chester et al. 2015). *Purgatorius* is primitive enough to have given rise to all primates, including the plesiadapiforms. Plesiadapiform families were numerous and diverse during parts of the Paleocene in western North America and western Europe, with some genera (e.g., *Plesiadapis*; see Table 8.1) living on both continents (Figure 8.4). Thus, there were probably corridors for plesiadapiform dispersal between the two continents, and it stands to reason that these mammals were living all across North America, including in the eastern half of the continent and at high latitudes. A few plesiadapiforms have been described from Asia (e.g., *Carpocristes*), but the affinities of these remain uncertain.

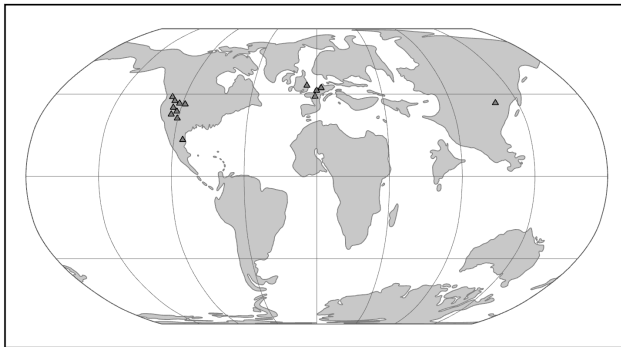


Figure 8.4 Map of the world in the Paleocene, highlighting plesiadapiform localities.

## General Morphological Features

Although there is much morphological variation among the families of plesiadapiforms, there are some common features of the group. Most plesiadapiforms were small, the largest being about three kilograms (approximately 7 lbs.; *Plesiadapis cookei*). They had small brains and fairly large snouts, with variable eye size (as deduced from the bony orbits). In general, the eyes faced more laterally than in euprimates. Most plesiadapiforms have large incisors

relative to the molars and in some species, the lower incisors (usually one pair) are reminiscent of long daggers or spears. In many plesiadapiforms, the upper central incisors are also very unusual, with small cusps spaced out like fingers, having some unknown function perhaps related to seizing or cropping food. Many species show reduction and/or loss of the canine and anterior premolars, with the resulting formation of a rodent-like **diastema**; this probably implies a herbivorous diet. The spaces available for the chewing musculature are very large, and most plesiadapiforms probably had very powerful chewing muscles, perhaps capable of processing very tough foods (e.g., leaves). Some families appear to have had very specialized diets, as suggested by unusual tooth and jaw shapes. For example, an enlarged, laterally compressed, blade-like lower premolar appears to have evolved via **convergent evolution** in two different families, the Carpolestidae and the Saxonellidae.

Arguably the most interesting and unusual family of plesiadapiforms is the Carpolestidae. This family contains three major genera and a few minor ones. They are almost exclusively from North America (with a couple of possible members from Asia), and mainly from the Middle and Late Paleocene. Their molars are not very remarkable, being quite similar to those of some other plesiadapiforms (e.g., Plesiadapidae). However, nearly everything else is unusual. Their lower posterior premolars (p4) are laterally compressed and blade-like with vertical serrations topped by tiny cusps. This unusual dental morphology is termed “**plagiaulacoid**” (Simpson 1933). It is similar to the condition in some living and fossil marsupials, but in marsupials, the blade-like lower tooth slides across a similar-looking blade-like upper tooth. In carpolestids, the blade-like tooth meets upper premolars that look completely different. The upper premolar occlusal surfaces are broad and are covered with many small cusps; the blade-like lower premolar might have cut across these cusps, between them, or both.

Many plesiadapiforms have hallmarks of arboreality in the skeleton, though the long bones are rather robust. Instead of having nails, most taxa had sharp claws on most or all of the digits. The extremities show signs that at least some of these archaic primates had grasping abilities comparable to those of primates and some arboreal marsupials. Nearly complete skeletons are known for several North American plesiadapiforms, and these have yielded a tremendous wealth of information on locomotor and foraging habits. Many plesiadapiforms appear to have been well adapted to clinging to vertical substrates (like a broad tree trunk) using their sharp claws, propelling themselves upward using powerful hindlimbs, bounding along horizontal supports, grasping smaller branches, and moving head-first down tree trunks. In carpolestids in particular, the skeleton appears to have been especially well adapted to moving slowly and carefully in small terminal branches. The big toe likely was especially good at grasping (Figure 8.5). There is a single specimen of a flattened nail-bearing distal big toe bone of *Carpolestes simpsoni* (Table 8.1), and this feature suggests affinities with euprimates.



Figure 8.5 An artistic rendition of *Carpolestes simpsoni* moving along a small diameter support.

### *Debate: Relationship of Plesiadapiforms to True Primates*

In the middle of the 20th century, treeshrews (Order Scandentia) were often considered part of the Order Primates, based on anatomical similarities between some treeshrews and primates. For many people, plesiadapiforms represented intermediates between primates and treeshrews, so plesiadapiforms were included in Primates as well.

Later, studies of reproduction and brain anatomy in treeshrews and lemurs suggested that treeshrews are not primates (e.g., Martin 1968). This was soon followed by the suggestion to also expel plesiadapiforms (Martin 1972). Like treeshrews, plesiadapiforms lack a postorbital bar, nails, and details of the ear region that characterize true primates. Many paleoanthropologists were reluctant to accept this move to banish plesiadapiforms (e.g., F. S. Szalay, P. D. Gingerich).

Later, Beard (1990) found that in some ways, the digits of paromomyid plesiadapiforms are actually more similar to those of dermopterans (Order Dermoptera), the closest living relatives of primates, than they are to those of primates themselves (but see Krause 1991). At the same time, Kay and colleagues (1990) found that cranial circulation patterns and auditory bulla morphology in the paromomyid, *Ignacius* (Table 8.1), are more like those of dermopterans than like those of primates.

For many anthropologists, this one-two punch effectively removed plesiadapiforms from the Order Primates. In the last two decades, the tide of opinion has turned again, with many researchers including plesiadapiforms in the Order Primates. New and more complete specimens demonstrate that the postcranial skeletons of plesiadapiforms, including the hands and feet, were primate-like, not dermopteran-like (Bloch and Boyer 2002, 2007). New fine-grained CT scans of relatively complete plesiadapiform skulls revealed that they share some key traits with primates to the exclusion of other placental mammals (Bloch and Silcox 2006). Most significant was the suggestion that *Carpolestes simpsoni* possessed an auditory bulla formed by the petrosal bone, like in all living primates.

The debate about the status of plesiadapiforms continues, owing to a persistent lack of key bones in some species and owing to genuine complexity of the anatomical traits involved. Maybe plesiadapiforms were the primitive stock from which all primates arose, with some plesiadapiforms (e.g., carpolestids) nearer to the primate **stem** than others.

## Geographic and Temporal Distribution

The first universally accepted primates to appear in the fossil record are the earliest members of two groups: the adapoids and the omomyoids. These groups become quite distinct over evolutionary time, filling mutually exclusive niches for the most part. However, at the start of the Eocene, the most primitive adapoids are very similar to the most primitive omomyoids.

Adapoids are called adapiforms or adapids by some and are here considered members of the superfamily **Adapoidea**. Omomyoids (omomyiforms or omomyids, according to some) are members of the superfamily **Omomyoidea**. The adapoids were mainly diurnal and herbivorous, with some achieving larger sizes than any plesiadapiforms (10 kg; 22 lbs.). By contrast, the omomyoids were mainly nocturnal, insectivorous and frugivorous, and small.

Both groups appear suddenly at the start of the Eocene, where they are present in western North America, western Europe, and India (Figure 8.6). If the primate *Altiatlasius* is an omomyoid, then these were also present in the Late Paleocene of North Africa. This wide dispersal of early primates was probably due to the presence of rainforest corridors extending far into northern latitudes.

In North America and Europe, both groups achieved considerable diversity in the Middle Eocene, then mostly died out at the end of that epoch. In some Eocene rock formations in the western United States, adapoids and omomyoids make up a major part of the mammalian fauna. The Eocene of India has yielded a modest diversity of euprimates, some of which are so primitive that it is difficult to know whether they are adapoids or omomyoids (or even early anthropoids).

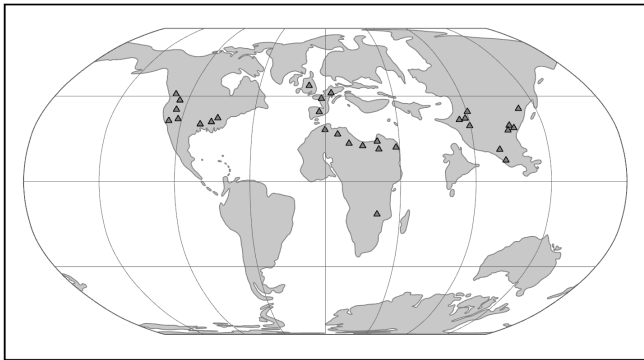


Figure 8.6 Map of the world in the Eocene, highlighting adapoid and omomyoid localities.

Adapoids and omomyoids barely survived the Eocene-Oligocene extinctions, when colder temperatures, increased seasonality, and the retreat of rainforests to lower latitudes led to changes in mammalian biogeography. In North America, one genus originally considered an omomyoid but recently placed in the Adapoidea persisted until the Miocene: *Ekgmowechashala*, from various parts of North America (Rose and Rensberger 1983). This taxon has highly unusual teeth and might have been a late immigrant to North America from Asia. In Asia, one family of adapoids, the Sivaladapidae, retained considerable diversity as late as the Late Miocene. In Africa and Arabia, several fossil

primates resembling extant strepsirrhines were present in the Eocene and Oligocene (approximately 34 million to 24 million years ago; Seiffert 2012).

## Adapoid Diversity

Adapoids were very diverse, particularly in the Eocene of North America and Europe. They can be divided into six families, with a few species of uncertain familial relationship. As a group, adapoids have some features in common, although much of what they share is primitive. Important features include the hallmarks of euprimates: postorbital bar, flattened nails, grasping extremities, and a petrosal bulla. In addition, some adapoids retain the primitive dental formula of 2.1.4.3; that is, in each quadrant of the mouth, there are two incisors, one canine, four premolars, and three molars. In general, the incisors are small compared to the molars, but the canines are relatively large, with sexual dimorphism in some species. Their snouts are somewhat long, and evidence from cranial specimens suggests that the carotid artery



branches that fed the front of the brain were variable and sometimes multiple. Cutting crests on the molars are well developed in some species, and the two halves of the mandible were fused at the midline in some species. Some adapoids were quite small (*Anchomomys* at a little over 100 g), and some were quite large (*Magnadapis* at 10 kg; 22 lbs.). Many had relatively small eyes, and in some the eyes faced somewhat laterally and/or upwardly. Furthermore, the spaces and attachment features for the chewing muscles were truly enormous in some species, suggesting that these muscles were very large and powerful. Taken together, this suggests an overall adaptive profile of diurnal herbivory. The canine sexual dimorphism in some species suggests a possible mating pattern of polygyny, as males in polygynous primate species often compete with each other for mates and have especially large canine teeth. The description that follows provides greater detail for the two best known adapoid families, the Adapidae and the Notharctidae; the additional families are summarized briefly.

The first adapoids to be described belong to the family Adapidae. This family was exclusive to Europe and includes some of the most cranially and postcranially robust primates of the Eocene (Figure 8.7). The first primate fossil ever named was *Adapis*, which was described by Baron Georges Cuvier between 1812 and 1822. Originally it was thought to be an ungulate and was recognized as a primate starting in the 1870s. Many adapids are known from exceptionally complete cranial and postcranial material from France and Switzerland. Unfortunately, most of the best fossils were collected in the 1800s as part of fertilizer mining operations and stratigraphic provenience of those specimens is uncertain. Furthermore, these fossils come from jumbled fissure fills, making it hard to know which bones came from the same animal.



Figure 8.7 Representative crania of adapids (European adapoids) from the natural history museum in Montauban, France. The white scale bar is 1 cm long.

Perhaps the best known adapoids are the Notharctidae from western North America, with a few species from Europe. Collections from Wyoming and Colorado in the United States have yielded many relatively complete skeletons—not to mention thousands of jaws with teeth—of such genera as *Notharctus* (Table 8.1), *Cantius*, and *Smilodectes*. The notharctids have been described as especially lemur-like (Table 8.2) on the basis of their postcranial adaptations for clinging and leaping as well as on the basis of overall cranial resemblance (Gregory 1920). The primitive *Cantius* has representatives in both North America and Europe.

The Cercamoniidae (e.g., *Donrussellia*; Table 8.1) from Europe and Asia includes some of the most primitive adapoids. The Caenopithecidae contains several genera once considered to be in Cercamoniidae, but that share an overall decrease



in the length of the snout accompanied by increasing robusticity of the jaws, loss of some premolar teeth, and leaping adaptations. This family must have been very widely dispersed across the northern continents as it has representatives in the Eocene of Europe, North America, Africa, and Asia (Kirk and Williams 2011; Seiffert et al. 2009). It includes the Fayum genera *Aframoni* and *Afradapis* (Table 8.1) as well as *Europolemur*, *Godinotia*, and *Darwinius* (Figure 8.8) from the Messel oil shales in Germany (approximately 47.3 million years ago).

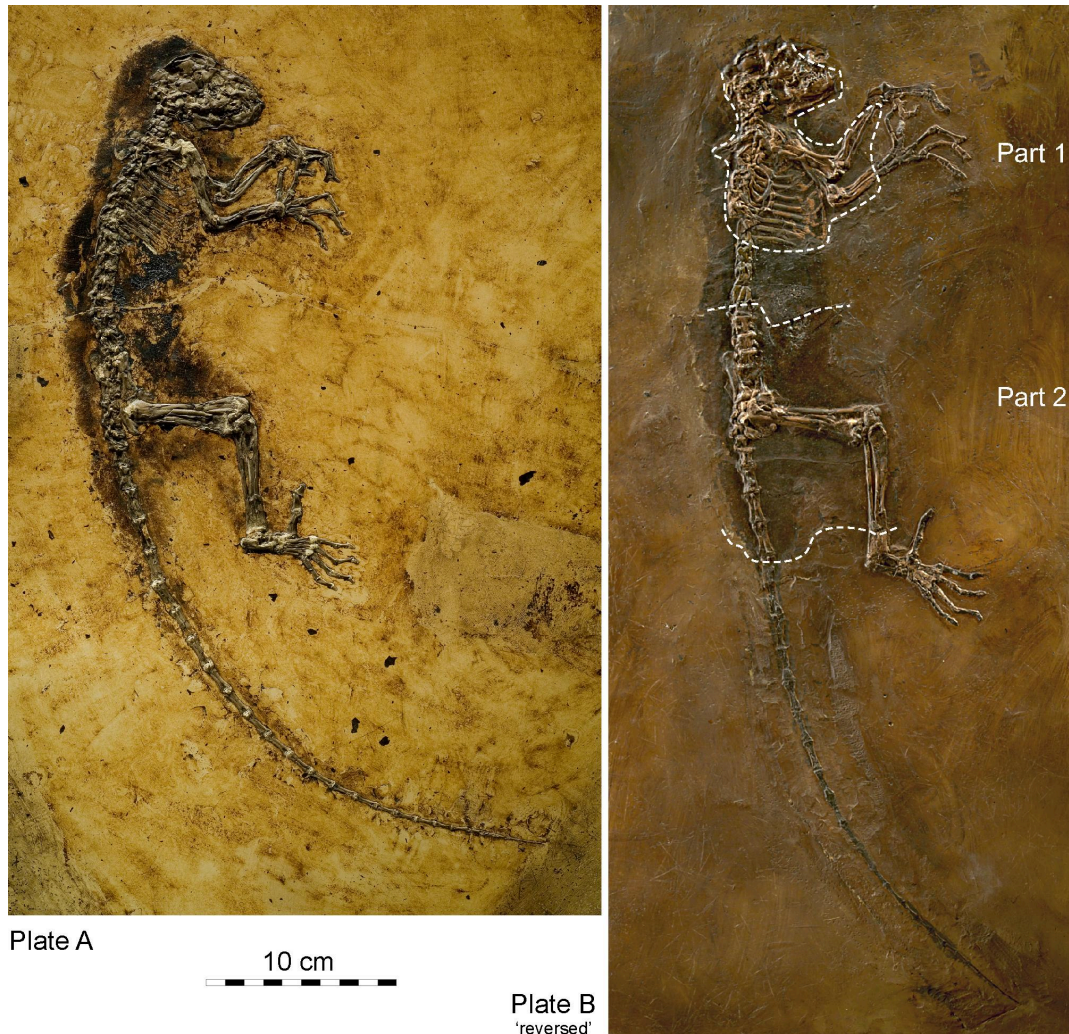


Figure 8.8 *Darwinius masillae*. The slab on the left is Plate A and the slab on the right is Plate B. The parts of the skeleton in B that are outside of the dashed lines were fabricated.

The Asiadapidae and Sivaladapidae are known from only Asia. Asiadapids are primitive adapoids from India. Postcranial elements are known from the same horizons as the described teeth, but the combination of anatomical traits in these bones makes it difficult to know if they belonged to adapoids or to omomyoids, both of which were present (Dunn et al. 2016; Rose et al. 2018). The Sivaladapidae from India, Pakistan, China, and Thailand (e.g., *Sivaladapis*; Table 8.1), mostly represented by jaws with teeth, persisted well into the Miocene and, in some cases, achieved a large size (4 kg; 8.82 lbs.). The sivaladapids might have evolved from the asiadapids.

## Omomyoid Diversity

Like adapoids, omomyoids appeared suddenly at the start of the Eocene and then became very diverse with most species dying out before the Oligocene. Omomyoids are known from thousands of jaws with teeth, relatively complete skulls for about a half-dozen species, and very little postcranial material. Omomyoids were relatively small primates, with the largest being less than three kilograms (approximately 7 lbs.; *Macrotarsius montanus*). All known crania possess a postorbital bar, which in some has been described as “incipient closure.” Some—but not all—known crania have an elongated bony ear tube extending lateral to the location of the eardrum, a feature seen in living tarsiers and catarrhines. The anterior teeth tend to be large, with canines that are usually not much larger than the incisors. Often it is difficult to distinguish closely related species using molar morphology, but the premolars tend to be distinct from one species to another. The postcranial skeleton of most omomyoids shows hallmarks of leaping behavior reminiscent of that of tarsiers.

European omomyoids are grouped together in one family, the Microchoeridae. All microchoerids were small, had relatively large eyes, and were probably nocturnal frugivore-insectivores. Some species are known from some of the same classic fissure fill deposits as adapoids. These have yielded beautifully preserved cranial material, especially for the genus *Necrolemur*. The cranial morphology of *Necrolemur* led early paleoanthropologists to suspect they had something to do with the origin of tarsiers, a hypothesis that persists to this day (see Table 8.2). Furthermore, well-preserved ankle bones of *Necrolemur* and other microchoerids are strikingly like the ankle bones of tarsiers (Schmid 1979), suggesting that if there is no special relationship to tarsiers, then at least they were leaping in very similar ways. In North America, omomyoids became very diverse and abundant. In fact, omomyoids from Wyoming are sufficiently abundant and from such stratigraphically controlled conditions that they have served as strong evidence for the gradual evolution of anatomical traits over time (Rose and Bown 1984). These gradual changes have also made it difficult in some cases to establish clear boundaries between species because such boundaries usually rely on discrete differences in anatomical traits. As with European omomyoids, those in North America were probably mainly small, nocturnal, and frugivorous-insectivorous (Strait 2001). The preserved crania in some species (e.g., *Shoshonius*) are very like those of tarsiers (Beard and MacPhee 1994), though lacking the degree of postorbital closure. Crania in some other species (e.g., *Rooneyia*) are quite unusual.

North American omomyoids are grouped into one family, Omomyidae, with two subfamilies: Anaptomorphinae and Omomyinae. The anaptomorphines were mostly smaller and more generalized whereas some omomyines achieved larger sizes (1–2 kg; 2–4 lbs.) and some were more specialized.

*Teilhardina* (Figure 8.9; Table 8.1) is one of the earliest and arguably the most primitive of omomyoids. *Teilhardina* has several species, most of which are from North America, with one from Europe (*T. belgica*) and one from Asia (*T. asiatica*). The species of this genus are anatomically similar and the deposits from which they are derived are roughly contemporaneous. Thus, this small primate likely dispersed across the northern continents very rapidly (Smith et al. 2006).



Figure 8.9 A map of the world during the earliest Eocene showing one hypothesis for the direction of dispersal of the omomyoid *Teilhardina*. The image also emphasizes the presence of forest corridors at high latitudes. Smith et al. 2006. Copyright (2006) National Academy of Sciences.

# THE EMERGENCE OF MODERN PRIMATE GROUPS

## Origins of Crown Strepsirrhines

Until the turn of this century, very little was known about the origins of the crown (living) strepsirrhines. The Quaternary record of Madagascar contains many amazing forms of lemurs, including giant sloth-like lemurs, lemurs with perhaps monkey-like habits, lemurs with koala-like habits, and even a giant aye-aye (Godfrey and Jungers 2002). However, in Madagascar early Tertiary continental sediments are lacking, and there is no record of lemur fossils before the Pleistocene.

The fossil record of galagos is slightly more informative. Namely, there are Miocene African fossils that are very likely progenitors of lorises (Simpson 1967). However, these are much like modern galagos and do not reveal anything about the relationship between crown strepsirrhines and Eocene fossil primates (but see below regarding *Propotto*). A similar situation exists for lorises in Asia: there are Miocene representatives, but these are substantially like modern lorises.

In 2003, the description of two new fossil genera from the Birket Qarun locality in the Fayum Basin of Egypt provided the “smoking gun” for the origin of crown strepsirrhines (Seiffert et al. 2003). *Saharagalago* and *Karanisia* are two small primates that bear clear affinities with crown strepsirrhines to the exclusion of other primates. Most striking is a lower canine of *Karanisia* that clearly sat within a strepsirrhine-style **toothcomb**. Recently, several other African primates have been recognized as having strepsirrhine affinities (Seiffert 2012). These include *Azibius* and *Algeripithecus* from Algeria, *Djebelemur* from Tunisia, *Omanodon* and *Shizarodon* from Oman, and *Namaia* from Namibia (see Marivaux et al. 2013). These important fossil primates are mainly known from teeth and jaws. The enigmatic Fayum primate *Plesiopithecus* is known from a single skull that has been compared to aye-ayes and to lorises (Godinot 2006; Simons and Rasmussen 1994a).

The now-recognized diversity of stem strepsirrhines from the Eocene and Oligocene of Afro-Arabia is strong evidence to suggest that strepsirrhines originated in that geographic area. This implies that lorises dispersed to Asia subsequent to an African origin. It is unknown what the first strepsirrhines in Madagascar were like. However, it seems likely that the lemuriform-lorisiform split occurred in continental Africa, followed by dispersal of lemuriform stock to Madagascar. Recent evidence suggests that *Propotto*, a Miocene primate from Kenya originally described as a potto antecedent, actually forms a clade with *Plesiopithecus* and the aye-aye; this might suggest that strepsirrhines dispersed to Madagascar from continental Africa more than once (Gunnell et al. 2018).

## The Fossil Record of Tarsiers

Tarsiers are so unusual that they fuel major debates about primate taxonomy. Tarsiers today are moderately diverse but geographically limited and not very different in their ecological habits—especially considering that the split between them and their nearest living relative probably occurred over 50 million years ago. If omomyoids are excluded, then the fossil record of tarsiers is very limited. Two fossil species from the Miocene of Thailand have been placed in the genus *Tarsius*, as has an Eocene fossil from China (Beard et al. 1994). These, and *Xanthorhysis* from the Eocene of China, are all very tarsier-like. In fact, it is striking that *Tarsius eoacenus* from China was already so tarsier-like as early as the Eocene. This suggests that tarsiers achieved their current morphology very early on in their evolution and have remained more or less the same while other primates changed dramatically. Two additional genera, *Afrotarsius* from the Oligocene of Egypt and Libya and *Afrasias* from the Eocene of Myanmar, have also been implicated in tarsier origins, though the relationship between them and tarsiers is unclear (Chaimanee et al. 2012). More recently, a partial skeleton

of a small Eocene primate from China, *Archicebus achilles* (dated to approximately 55.8 million to 54.8 million years ago), was described as the most basal tarsiiform (Ni et al. 2013). This primate is reconstructed as a diurnal insectivore and an arboreal quadruped that did some leaping—but not to the specialized degree seen in living tarsiers. The anatomy of the eye in living tarsiers suggests that their lineage passed through a diurnal stage, so *Archicebus* (and diurnal omomyoids) might represent such a stage.

## Climate Change and the Paleogeography of Modern Primate Origins

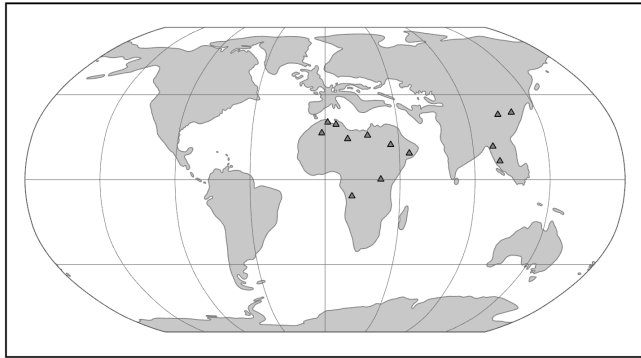


Figure 8.10 Map of key localities of early anthropoids. Note that the landmasses are in their current configuration.

Changing global climate has had profound effects on primate dispersal patterns and ecological habits over evolutionary time. Primates today are strongly tied to patches of trees and particular plant parts such as fruits, seeds, and immature leaves. It is no surprise, then, that the distribution of primates mirrors the distribution of forests. Today, primates are most diverse in the tropics and especially in tropical rainforests. Global temperature trends across the Tertiary have affected primate ranges. Following the Cretaceous-Tertiary extinction event, cooler temperatures and greater seasonality characterized the Paleocene. In the Eocene, temperatures (and probably rainfall) increased globally and rainforests

likely extended to very high latitudes. During this time, euprimates became very diverse. With cooling and increased aridity at the end of the Eocene, many primate extinctions occurred in the northern continents and the surviving primates were confined to lower latitudes in South America, Afro-Arabia, Asia, and southern Europe. Among these survivors are the progenitors of the living groups of primates: lemurs and lorises, tarsiers, New World monkeys, Old World monkeys, and apes (Figure 8.10).

## Competing Hypotheses for the Origin of Anthropoids

There is considerable debate among paleoanthropologists as to the geographic origins of anthropoids. In addition, there is debate regarding the source group for anthropoids. Three different hypotheses have been articulated in the literature. These are the adapoid origin hypothesis, the omomyoid origin hypothesis, and the tarsier origin hypothesis (Figure 8.11).

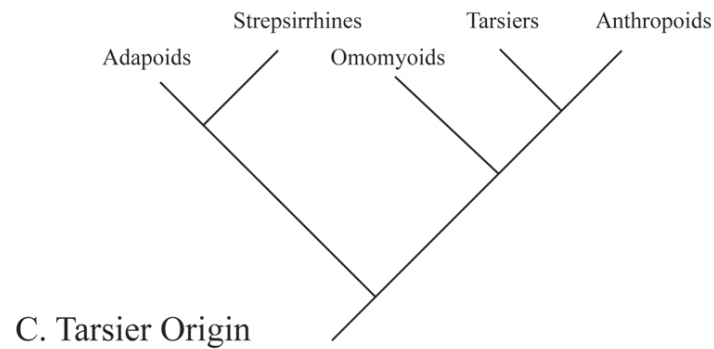
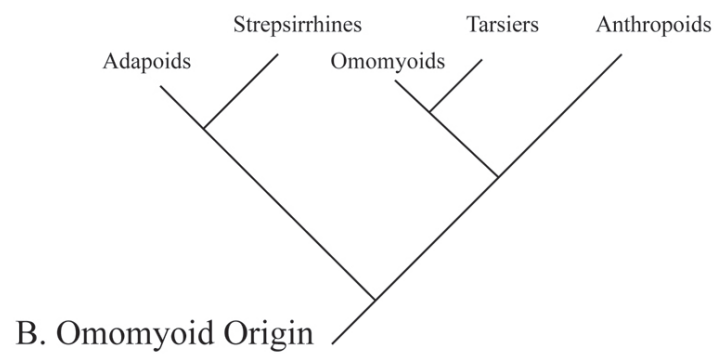
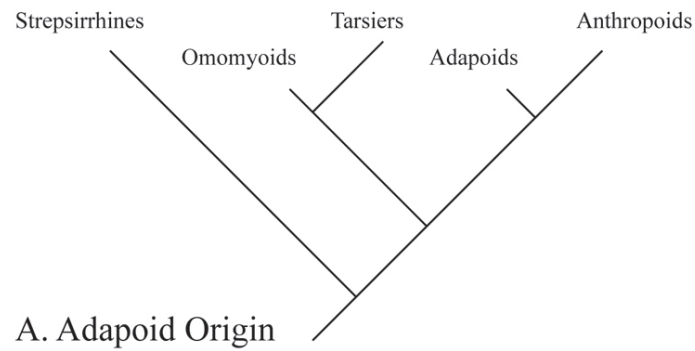


Figure 8.11 Competing trees for anthropoid origins. Branch lengths are not to scale. Note that the position of strepsirrhines is not necessarily specified by the omomyoid origin and tarsier origin models.

## *Adapoid Origin Hypothesis*

Resemblances between some adapoids and some extant anthropoids include fusion of the **mandibular symphysis**, overall robusticity of the chewing system, overall large body size, features that signal a diurnal lifestyle (like relatively



small eye sockets), and details of ankle bone morphology. Another feature in common is canine sexual dimorphism, which is present in some species of adapoids (probably) and in several species of anthropoids.

These features led some paleoanthropologists in the last half of the 20th century to suggest that anthropoids arose from adapoid stock (Gingerich 1980; Simons and Rasmussen 1994b). One of the earliest supporters of the link between adapoids and anthropoids was Hans Georg Stehlin, who described much of the best material of adapoids and who compared these Eocene primates to South American monkeys (Stehlin 1912). In more recent times, the adapoid origin hypothesis was reinforced by resemblances between these European adapoids (especially *Adapis* and *Leptadapis*) and some early anthropoids from the Fayum Basin (e.g., *Aegyptopithecus*, see below; Table 8.1).

Unfortunately for the adapoid hypothesis, most of the shared features listed above probably arose independently in the two groups as adaptations to a diet of hard and/or tough foods. For example, fusion of the mandibular symphysis likely evolved as a means to strengthen the jaw against forces that would pull the two halves away from each other, in the context of active chewing muscles on both sides of the head generating great bite forces. This context would also favor the development of robust jaws, large chewing muscles, shorter faces, and some other features shared by some adapoids and some anthropoids.

As older and more primitive anthropoids were found in the Fayum Basin, it became clear that the earliest anthropoids from Africa do not possess these features of jaw robusticity (Seiffert et al. 2009). Furthermore, many adapoids never evolved these features. Fusion of the mandibular symphysis in adapoids is actually quite different from that in anthropoids and probably occurred during juvenile development in the former (Beecher 1983; Ravosa 1996). Eventually, the adapoid origin hypothesis fell out of favor among most paleoanthropologists, although the description of *Darwinius* is a recent revival of that idea (Franzen et al. 2009; but see Seiffert et al. 2009, Williams et al. 2010b).

## *Omomyoid Origin Hypothesis*

Similarities in cranial and hindlimb morphology between some omomyoids and extant tarsiers have led to the suggestion that tarsiers arose from some kind of omomyoid. In particular, *Necrolemur* has many features in common with tarsiers, as does the North American *Shoshonius*, which is known from a few beautifully preserved (although distorted) crania. Tarsiers and *Shoshonius* share exclusively some features of the base of the cranium; however, *Shoshonius* does not have any sign of postorbital closure and it lacks the bony ear tube of tarsiers. Nevertheless, some of the resemblances between some omomyoids and tarsiers suggest that tarsiers might have originated from within the Omomyoidea (Beard 2002; Beard and MacPhee 1994). In this scenario, although living tarsiers and living anthropoids might be sister taxa, they might have evolved from different omomyoids, possibly separated from each other by more than 50 million years of evolution, or anthropoids evolved from some non-omomyoid fossil group. The arguments against the omomyoid origin hypothesis are essentially the arguments for the tarsier origin hypothesis (see below). Namely, tarsiers and anthropoids share many features (especially of the soft tissues) that must have been retained for many millions of years or must have evolved convergently in the two groups. Furthermore, a key hard-tissue feature shared between the two extant groups, the postorbital septum, was not present in any omomyoid. Therefore, that feature must have arisen convergently in the two extant groups or must have been lost in omomyoids. Neither scenario is very appealing, although recent arguments for convergent evolution of the postorbital septum in tarsiers and anthropoids have arisen from embryology and histology of the structure (DeLeon et al. 2016).



## *Tarsier Origin Hypothesis*

Several paleoanthropologists have suggested that there is a relationship between tarsiers and anthropoids to the exclusion of omomyoids and adapoids (e.g., Cartmill and Kay 1978; Ross 2000; Williams and Kay 1995). As mentioned, tarsiers and anthropoids today share several traits. These include many soft-tissue features related to the olfactory system such as the loss of a hairless external nose and loss of the median cleft running from the nose to the mouth (possessed by strepsirrhines). Also included are aspects of the visual system such as the loss of a reflective layer at the back of the eye, similarities in carotid circulation to the brain, and mode of placentation. Unfortunately, none of these can be assessed directly in fossils. Some bony similarities between tarsiers and anthropoids include an extra air-filled chamber below the middle ear cavity, reduced bones within the nasal cavity, and substantial postorbital closure; these can be assessed in fossils, but the distribution of these traits in omomyoids does not yield clear answers. Furthermore, several of the similarities between tarsiers and anthropoids are probably due to similarities in the sensory systems, which might have evolved in parallel for ecological reasons. Although early attempts to resolve the crown primates with molecular data were sometimes equivocal or in disagreement with one another, more recent analyses (including those of short interspersed elements) suggest that tarsiers and anthropoids are sister groups to the exclusion of lemurs and lorises (Williams et al. 2010a). However, this does not address omomyoids, all of which are far too ancient for DNA extraction.

The above three hypotheses are not the only possibilities for anthropoid origins. It may be that anthropoids are neither the closest sister group of tarsiers, nor evolved from adapoids or omomyoids. In recent years, two new groups of Eocene Asian primates have been implicated in the origin of anthropoids: the eosimiids and the amphipithecids. It is possible that one or the other of these two groups gave rise to anthropoids. Regardless of the true configuration of the tree for crown primates, the three major extant groups probably diverged from each other quite long ago (Seiffert et al. 2004).

## Early Anthropoid Fossils in Africa

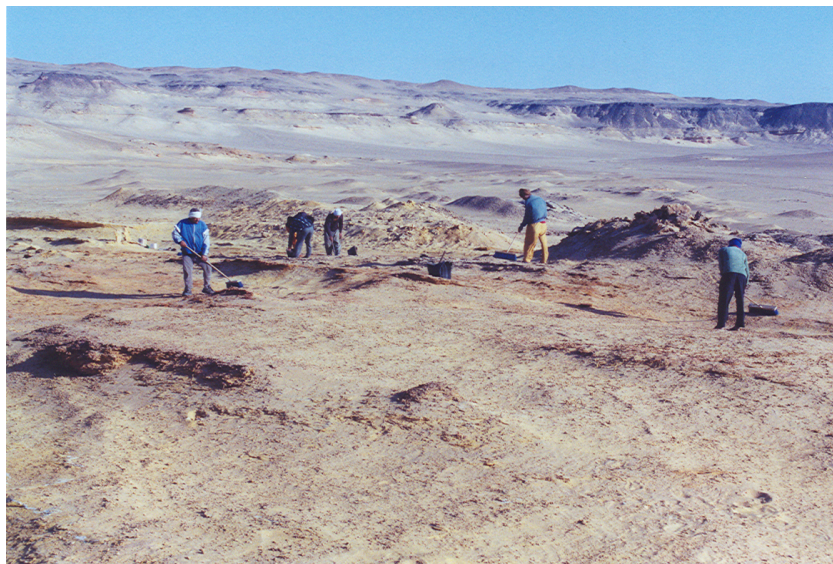


Figure 8.12 Egyptian workers sweeping Quarry I in the Fayum Basin (2004). This is a technique called wind harvesting that removes the desert crust and permits wind to blow out fine sediment and reveal fossils.



Figure 8.13 Elwyn Laverne Simons excavating *Aegyptopithecus* in the Fayum Basin.

The classic localities yielding the greatest wealth of early anthropoid fossils are those from the Fayum Basin in Egypt (Simons 2008; Figure 8.12). The Fayum is a veritable oasis of fossil primates in an otherwise rather spotty early Tertiary African record. Since the 1960s, teams led by E. L. Simons have discovered several new species of early anthropoids, some of which are known from many parts of the skeleton and several individuals (Figure 8.13).

The Fayum Jebel Qatrani Formation and Birket Qarun Formation between them have yielded a remarkable array of terrestrial, arboreal, and aquatic mammals. These include ungulates, bats, sea cows, elephants, hyraxes, rodents, whales, and primates. Also, many other vertebrates, like water birds, were present. The area at the time of deposition (Late Eocene through Early Oligocene) was probably very wet, with slow-moving rivers, standing water, swampy conditions, and lots of trees (see Bown and Kraus 1988). In short, it was an excellent place for primates.

## General Morphology of Anthropoids

The anthropoids known from the Fayum (and their close relatives from elsewhere in East Africa and Afro-Arabia) bear many of the anatomical hallmarks of extant anthropoids; however, there are primitive forms in several families that lack one or more anthropoid traits. All Fayum anthropoids known from skulls possess postorbital closure, most had fused mandibular symphyses, and most had ring-like **ectotympanic** bones. Tooth formulae were generally either 2.1.3.3 or 2.1.2.3. Fayum anthropoids ranged in size from the very small *Qatrania* and *Biretia* (less than 500 g) to the much-larger *Aegyptopithecus* (approximately 7 kg; 15 lbs.). Fruit was probably the main component of the diet for most or all of the anthropoids, with some of them supplementing with leaves (Kay and Simons 1980; Teaford et al. 1996; Kirk and Simons 2001). Most Fayum anthropoids were probably diurnal above-branch quadrupeds. Some of them (e.g., *Apidium*; Table 8.1) were probably very good leapers (Gebo and Simons 1987), but none show specializations for gibbon-style suspensory locomotion. Some of the Fayum anthropoids are known from hundreds of individuals, permitting the assessment of individual variation, sexual dimorphism, and in some cases growth and development. The description that follows provides greater detail for the two best known Fayum anthropoid families, the Propiopithecidae and the Parapithecidae; the additional families are summarized briefly.

## Fayum Anthropoid Families

The Propiopithecidae (e.g., *Pliopithecus*; Table 8.1) include the largest anthropoids from the fauna, and they are known from several crania and some postcranial elements. They have been suggested to be stem catarrhines (Old World Monkeys and apes), although perhaps near the split between catarrhines and platyrrhines. The best known propiopithecid is *Aegyptopithecus*, known from many teeth, crania, and postcranial elements. The crania (Figure 8.14) show substantial morphological variation between individuals, some of which might be due to sexual dimorphism and a polygynous mating system (Simons et al. 2007). *Aegyptopithecus* was large (greater than 7 kg; 15 lbs.) with prominent attachments for the chewing muscles and with low, rounded, and well-butressed molars. The snout is long and the canines are large. There is only partial development of a bony ear tube (Simons et al. 2007). The known long bones of *Aegyptopithecus* are quite robust, and the skeleton suggests that this animal was a generalized arboreal quadruped with no strong specialization for suspension (Gebo and Simons 1987).



Figure 8.14 Female and male skull material for *Aegyptopithecus zeuxis*. The female is on the left. The mandibles are not associated with the crania. Simons et al. 2007. Copyright (2007) National Academy of Sciences.

An extremely abundant and unusual family of anthropoids from the Fayum is the Parapithecidae. Parapithecids have the primitive anthropoid tooth formula of 2.1.3.3 and they have very large conules on the upper molars and premolars. The parapithecid *Apidium* is known from many jaws with teeth, crushed and distorted crania, and several skeletal elements. The molars of *Apidium* had low, rounded cusps and thick enamel, suggesting a frugivorous diet. *Apidium* was probably a good leaper, having tightly apposed distal tibia and fibula as well as a narrow distal femur with a deep patellar groove (Fleagle and Simons 1995). *Parapithecus* is known from cranial material including a beautiful, undistorted cranium. This genus shows extreme reduction of the incisors, including complete absence of the lower incisors in *P. grangeri* (Simons 2001). This trait is unique among primates. *Biretia* is a primitive member of the family that has the primitive trait of an unfused mandibular symphysis. Parapithecids were once thought to be the ancestral stock of platyrrhines; however, their platyrrhine-like features are probably just primitive retentions and the most conservative approach is to consider them stem anthropoids.

The Oligopithecidae share the catarrhine tooth formula of 2.1.2.3 as well as having a canine honing complex that involves the anterior lower premolar. The postcranial elements known for the group suggest generalized arboreal quadrupedalism. The best known member, *Catopithecus*, is known from crania that demonstrate a postorbital septum and from mandibles that lack symphyseal fusion (Simons and Rasmussen 1996). The jaws are deep, with broad muscle attachment areas and crested teeth. *Catopithecus* was probably a little less than a kilogram in weight.

The Proteopithecidae had an overall primitive dentition that includes three premolars per quadrant and a generalized skeleton; they are considered stem anthropoids. The best known genus, *Proteopithecus*, is represented by dentitions, crania, and postcranial elements that suggest a diet of mostly fruit and a generalized style of locomotion, including arboreal quadrupedalism with some leaping (Simons and Seiffert 1999). It weighed about a kilogram.

Other genera of putative anthropoids from the Fayum include the very poorly known *Arsinoea*, the contentious *Afrotarsius*, and the enigmatic *Nosmips*. The last of these possesses traits of several major primate **clades** and defies classification (Seiffert et al. 2010).

## Early Anthropoid Fossils in Asia

For the last half of the 1900s, researchers believed that Africa was the unquestioned homeland of early anthropoids (see Fleagle and Kay 1994). However, two very different groups of primates from Asia soon began to change that. One was an entirely new discovery (Eosimiidae), and the other was a poorly known group discovered decades prior (Amphipithecidae). Soon, attention on anthropoid origins began to shift eastward (see Ross and Kay 2004, Simons 2004). If anthropoids arose in Asia instead of Africa, then this implies that the African early anthropoids either emigrated from Asia or evolved their anthropoid traits in parallel with living anthropoids.

### *Eosimiids*

First described in the 1990s, the eosimiids are best represented by *Eosimias* (Table 8.1). This “dawn monkey” is known from relatively complete jaws with teeth, a few small fragments of the face, and some postcranial elements (Beard et al. 1994; Beard et al. 1996; Gebo et al. 2000). The lower jaw is distinctive in being very deep relative to its length and breadth, as in some early Fayum anthropoids (Figure 8.15). It also has pointed incisors that are about the same size as the canines. The lower premolars are crowded together and they are set obliquely in the jaw. This last trait, also present in another eosimiid called *Bahinia*, was described as a shared derived trait with anthropoids, though it is also present in some adapoids (e.g., *Afradapis* from North Africa and *Asiadapis* [Table 8.1] from India). The mandibular symphysis is vertically inclined, as in some anthropoids, but is unfused. Overall, *Eosimias* was small, no heavier than a can of soda pop. *Eosimias* (along with the other less-well-known genera in its family) bears some resemblance to tarsiers as well as anthropoids. The shared features with anthropoids are mainly jaw shape and details of dental morphology. Unfortunately, no good crania are known for this family and the anatomy of, for example, the posterior orbital margin could be very revealing as to higher-level relationships.



Figure 8.15 Cast of the right half of the mandible of *Eosimias centennicus*, type specimen. The white scale bar is 1 cm long.

### *Amphipithecids*

Amphipithecids are small- to medium-size primates (up to 10 kg; 22 lbs.). Most are from the Eocene Pondaung Formation in Myanmar (Early–Middle Eocene), but one genus is known from Thailand. They were first discovered in the 1910s, and all of the specimens discovered in the first half of the 20th century were fragmentary jaws with teeth that were mostly worn down. Nevertheless, some dental similarities with anthropoids were noted early on. These include deep jaws and wide basins that separate low molar cusps. Starting in the 1970s, intensive collecting efforts in Myanmar yielded new material for the best known genera *Pondaungia* and *Amphipithecus* (Ciochon and Gunnell 2002; Table 8.1). Soon, another genus was discovered: *Myanmarpithecus*. It bears some resemblance to the other genera but has longer molar crests, suggesting a higher degree of folivory (Kay et al. 2004). Another amphipithecid, *Siamopithecus* from Thailand, has very rounded molars and was probably a seed-eater (Figure 8.16). In addition to teeth and jaws, some cranial fragments, ankle material, and ends of postcranial bones have been found for *Pondaungia*. There are important resemblances between the postcranial bones of *Pondaungia* and those of adapoids, suggesting adapoid affinities for the amphipithecidae. This would imply that the resemblances with anthropoids in the teeth are convergent, based on similarities in diet (see



Ciochon and Gunnell 2002). Unfortunately, the association between postcranial bones and teeth is not definite. With other primates in these faunas (including eosimiids), one cannot be certain that the postcranial bones belong with the teeth. Perhaps, as suggested by some, some of the bones belong to a sivaladapid (or asiadapid) and others belong to an early anthropoid (Beard et al. 2007; Marivaux et al. 2003). Additional well-associated material of amphipithecids would help to clear up this uncertainty.

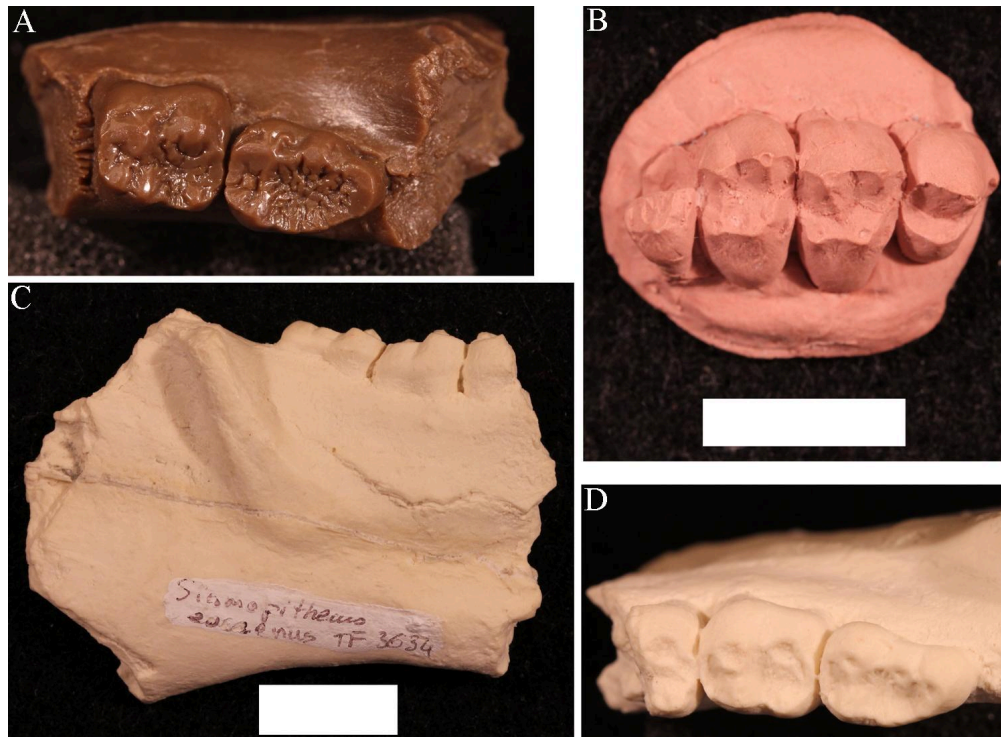


Figure 8.16 Casts of representative amphipithecid material. A, *Pondaungia cotteri* right lower jaw fragment with m2 and m3. B, *Siamopithecus eocaenus* right upper jaw fragment with p4-m3. C, *S. eocaenus* right lower jaw fragment with partial m1, m2, and m3 in lateral view; note the great depth of this jaw. D, same as in C, but occlusal view. White scale bars are 1 cm long; the scale is the same for A, B, and D.

## Platyrrhine Dispersal to South America

Today there is an impressive diversity of primates in South and Central America. These are considered to be part of a single clade, the Platyrrhini. Primates colonized South America sometime in the Eocene from an African source. In the first half of the 20th century, the source of platyrrhines was a matter of major debate among paleontologists, with some favoring a North American origin (e.g., Simpson 1940).

Part of the reason for this debate is that South America was an island in the Eocene. Primates needed to cross open ocean to get there from either North America or Africa, although the distance from the former was shorter. Morphology yields clues to platyrrhine origins. The first known primates in South America have more in common morphologically with African primates than with North American ones. At the time, anthropoids were popping up in North Africa, whereas the only euprimates in North America were adapoids and omomyoids. Despite lacking a bony ear tube, early platyrrhines shared a great deal with other anthropoids, including full postorbital closure and fusion of the mandibular symphysis.

The means by which a population of small North African primates managed to disperse across the Atlantic and survive

to colonize South America remains a mystery. The most plausible scenario is one of rafting. That is, primates must have been trapped on vegetation that was blown out to sea by a storm. The vegetation then became a sort of life raft, which eventually landed ashore, dumping its passengers in South America. Rodents probably arrived in South America in the same way (Antoine et al. 2012).

Once ashore, platyrrhines must have crossed South America fairly rapidly because the earliest-known primates from that continent are from Peru (Bond et al. 2015). Soon after that, platyrrhines were in Bolivia, namely *Branisella*. By the Miocene, platyrrhines were living in extreme southern Argentina and were exploiting a variety of feeding niches. The Early Miocene platyrrhines were all somewhat primitive in their morphology, but some features that likely arose by ecological convergence suggest (to some) relationships with extant platyrrhine families. This has led to a lively debate about the pattern of primate evolution in South America (Kay 2015; Kay and Fleagle 2010; Rosenberger 2010). By the Middle Miocene, clear representatives of modern families were present in a diverse fauna from La Venta, Colombia (Wheeler 2010). The Plio-Pleistocene saw the emergence of giant platyrrhines as well as several taxa of platyrrhines living on Caribbean islands (Cooke et al. 2016).

The story of platyrrhines seems to be one of amazing sweepstakes dispersal, followed by rapid diversification and widespread geographic colonization of much of South America. After that, dramatic extinctions resulted in the current, much smaller geographic distribution of platyrrhines. These extinctions were probably caused by changing climates, leading to the contraction of forests. Platyrrhines dispersed to the Caribbean and to Central America, with subsequent extinctions in those regions that might have been related to interactions with humans. Unlike anthropoids of the Old World, platyrrhines do not seem to have evolved any primarily terrestrial forms and so have always been highly dependent on forests.

## SPECIAL TOPIC: JONATHAN PERRY AND PRIMATES OF THE EXTREME SOUTH

Many primates are very vulnerable to ecological disturbance because they are heavily dependent on fruit to eat and trees to live in. This is one reason why so many primates are endangered today and why many of them went extinct due to climatic and vegetational changes in the past. Jonathan Perry's paleontological research focuses on primates that lived on the edge of their geographic distribution. This research has taken him to two extremes in the Americas: extreme southern Patagonia and the Canadian prairies.

Santa Cruz Province in Argentina is as far south as primates have ever lived. The Santa Cruz fauna of the Miocene has yielded a moderate diversity of platyrrhines, each with slightly different dietary adaptations. These include *Homunculus* (Table 8.1), first described by Florentino Ameghino in 1891 (Figure 8.17). Recent fieldwork by Perry and colleagues in Argentina has revealed several skulls of *Homunculus* as well as many parts of the skeleton (Kay et al. 2012). The emerging profile of this extinct primate is one of a dedicated arboreal quadruped that fed on fruits and leaves. Many of the foods eaten by *Homunculus* must have been very tough and were probably covered and impregnated with grit; we suspect this because the cheek teeth are very worn down, even in young individuals, and because the molar tooth roots were very large, presumably to resist strong bite forces (Perry et al. 2010, 2014).



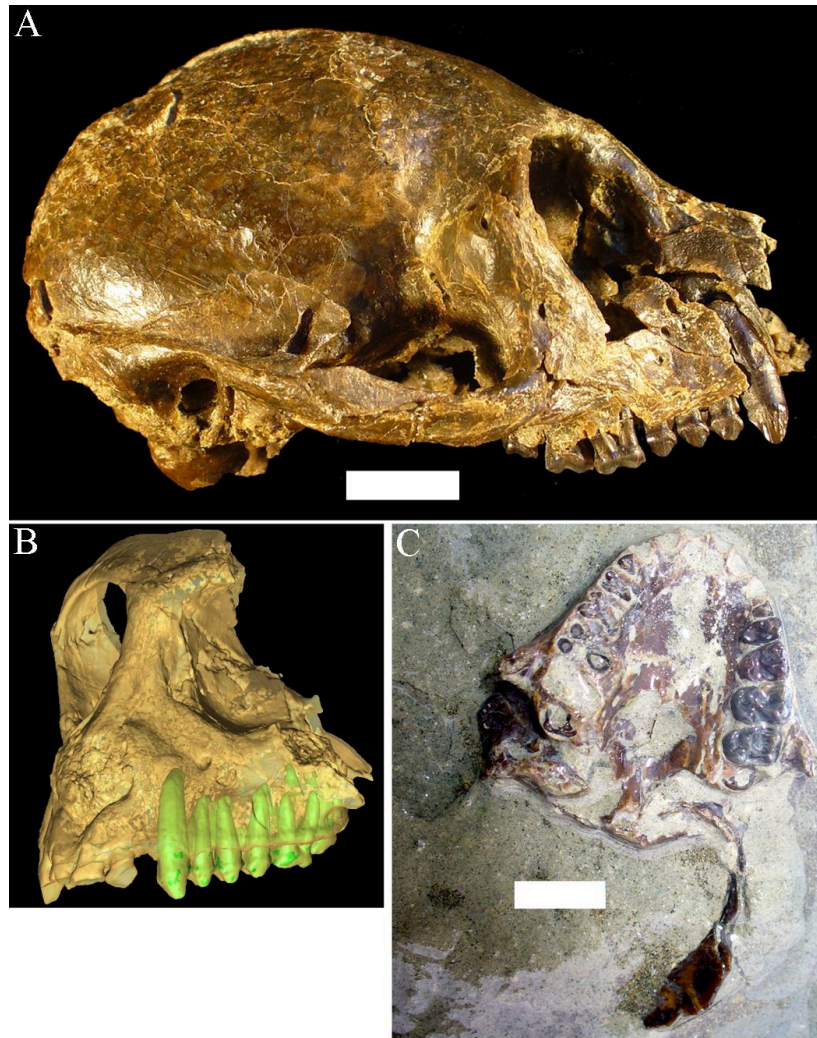


Figure 8.17 Representative specimens of *Homunculus patagonicus*. A, adult cranium in lateral view. B, adult cranium surface reconstructed from microCT scans, with the teeth segmented out. C, juvenile cranium. White scale bars are 1cm long.

Perry began working in Argentina while a graduate student at Duke University. He participated as a field assistant in a team led by his Ph.D. advisor, Richard F. Kay, and Argentine colleagues Sergio F. Vizcaíno and M. Susana Bargo. Most of the localities examined belong to a suite of beach sites known since the 1800s and visited by many field parties from various museums in the early 1900s. Since 2003, their international team of paleontologists from the U.S. and Argentina has visited these localities every single year (Figure 8.18). Over time, new fossils and new students have led to new projects and new approaches, including the use of microcomputed tomography (microCT) to visualize and analyze internal structures of the skeleton.



Figure 8.18 Field localities in Argentina and Canada. A, Cañadon Palos locality, coastal Santa Cruz Province, Argentina. B, Swift Current Creek locality, southwest Saskatchewan, Canada.

# PLANET OF APES

## Geologic Activity and Climate Change in the Miocene

The Miocene Epoch was a time of mammalian diversification and extinction, global climate change, and ecological turnover. In the Miocene, there was an initial warming trend across the globe with the expansion of subtropical forests, followed by widespread cooling and drying with the retreat of tropical forests and replacement with more open woodlands and eventually grasslands. It was also a time of major geologic activity. On one side of the globe, South America experienced the rise of the Andes Mountains. On the other side, the Indian subcontinent collided with mainland Asia, resulting in the rise of the Himalayan Mountains. In Africa, volcanic activity promoted the development of the East African Rift System. Critical to the story of ape evolution was the exposure of an intercontinental landbridge between East Africa and Eurasia, permitting a true planet of apes (Figure 8.19).

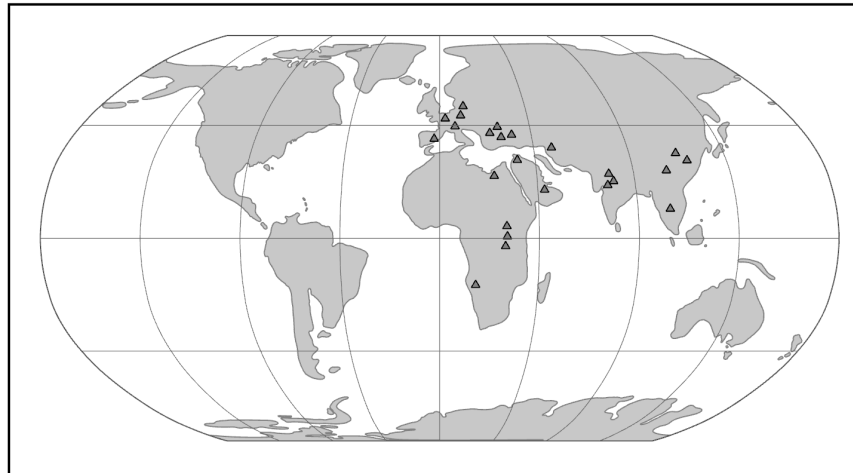


Figure 8.19 Map of the world in the Miocene, highlighting fossil ape localities.

## Geographic Distribution: Africa, Asia, Europe

The world of the Miocene had tremendous ape diversity compared to today. The earliest records of fossil apes are from Early Miocene deposits in Africa. However, something dramatic happened around 16 million years ago. With the closure of the ancient Tethys Sea, the subsequent exposure of the *Gomphotherium* Landbridge, and a period of global warming, the Middle–Late Miocene saw waves of emigration of mammals (including primates) out of Africa and into Eurasia, with evidence of later African re-entry for some (Harrison 2010). Some of the mammals that dispersed from Africa to Eurasia and back were apes. Though most of these early apes left no modern descendants, some of them gave rise to the ancestors of modern apes—including **hominins** (Figure 8.20).



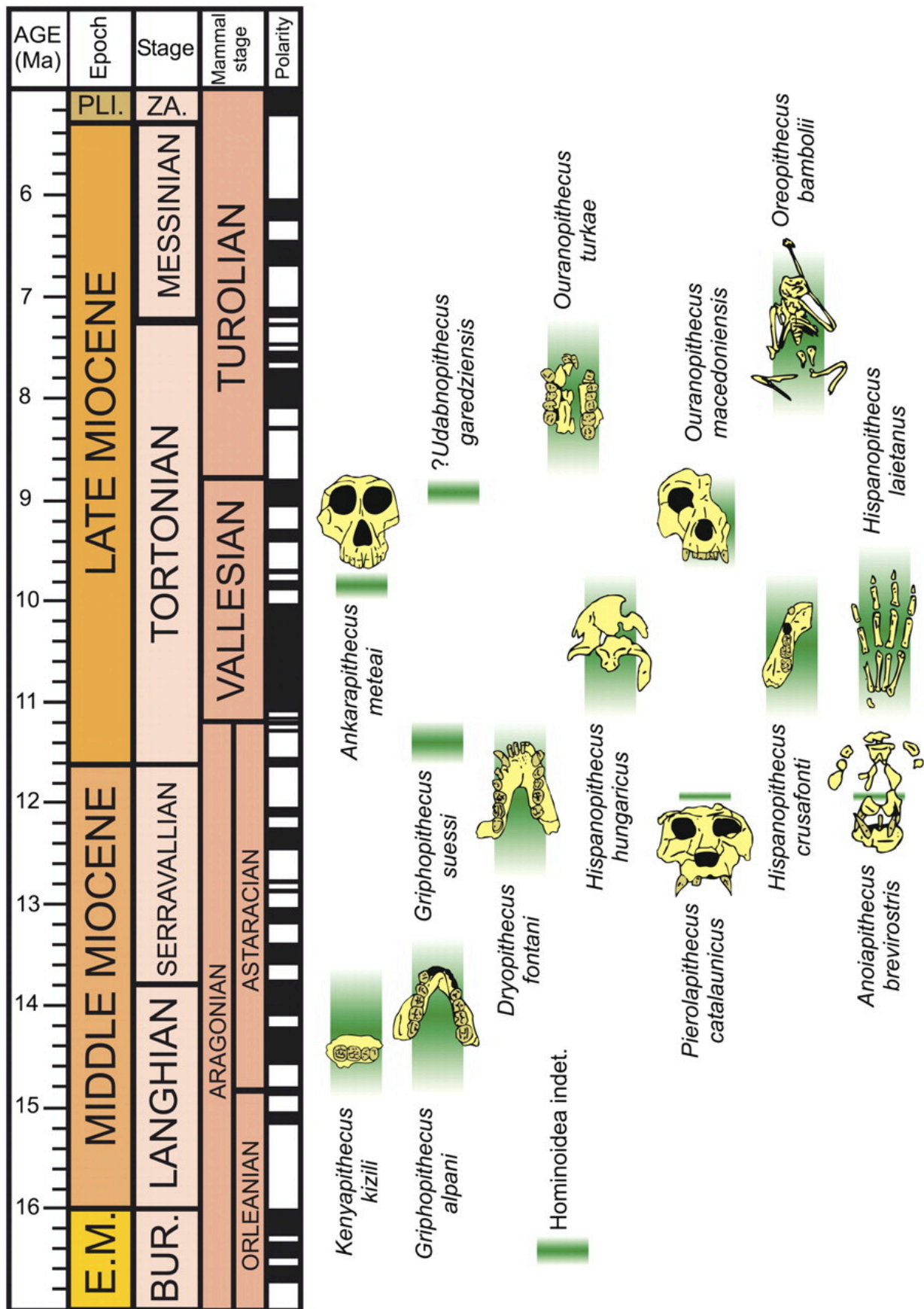


Figure 8.20 Representative Miocene apes set against a geologic time scale. Casanova-Vilar et al. (2011).

## Where Are the Monkeys? Old World Monkey Diversity in the Miocene

Whereas the Oligocene deposits in the Fayum of Egypt have yielded the earliest-known catarrhine fossils, the Miocene demonstrates some diversification of Cercopithecoidea. However, compared to the numerous and diverse Miocene apes (see below), monkeys of the Miocene are very rare and restricted to a single extinct family, the Victoriapithecidae (Table 8.1). This family contains the earliest definite Old World monkeys. These monkeys are known from northern and eastern Africa between 20 million and 12.5 million years ago (Miller et al. 2009). The best known early Old World monkey is *Victoriapithecus* (Figure 8.21; Table 8.1), a small-bodied (approximately 7 kg; 15 lbs.), small-brained monkey with a long sloping face and round, narrowly spaced orbits. *Victoriapithecus* shares some cranial features with *Aegyptopithecus*; for example, both have a deep malar region of the zygomatic bone and a well-developed sagittal crest (Benefit and McCrossin 1997; Fleagle 2013). Beginning in the Early Miocene, and certainly by the Middle Miocene, bilophodonty, known to be a hallmark of molar teeth of modern Old World monkeys, was present to some extent. Although this dental feature is often indicative of increased leaf-processing efficiency in modern Old World monkeys, *Victoriapithecus* has been reconstructed as being more frugivorous and perhaps spent more time on the ground (terrestrial locomotion) than in the trees (arboreal locomotion; Blue et al. 2006). The two major groups of Old World monkeys today are cercopithecines and colobines. The earliest records demonstrating clear members of each of these two groups are at the end of the Miocene. Examples include the early colobine *Microcolobus* from Kenya and the early cercopithecine *Pliopapio* from Ethiopia.



Figure 8.21 Skull of *Victoriapithecus macinnesi* (Musée d'Histoire Naturelle, Paris).

## The Story of Us, the Apes

### *African Ape Diversity*

The Early Miocene of Africa has yielded around 14 genera of early apes (Begun 2003). Many of these taxa have been reconstructed as frugivorous arboreal quadrupeds (Kay 1977).

One of the best studied of these genera is the East African *Proconsul* (Family Proconsulidae; Table 8.1), a short-faced ape with generalized dentition and above-branch locomotor behaviors (Begun 2007). Several species have been described, with body mass reconstructions ranging from 17 to 50 kg (approximately 37–110 lbs.). A paleoenvironmental study reconstructed the habitat of *Proconsul* to be a dense, closed-canopy tropical forest (Michel et al. 2014). One of the most interesting questions about this taxon is whether or not it possessed a tail, a lack of which is an important characteristic for distinguishing living apes from Old World monkeys. No caudal vertebrae (tail bones) have been found in direct association with *Proconsul* postcrania, and the morphology of the sacrum is consistent with *Proconsul* lacking a tail (Russo 2016; Ward et al. 1991).

Overall, the African ape fossil record in the Late Miocene is sparse, with seven fossil localities dating between eleven and five million years ago (Pickford et al. 2009). Nevertheless, most species of great apes live in Africa today. Where did the progenitors of modern African apes arise? Did they evolve in Africa or somewhere else? The paucity of apes in the Late Miocene of Africa stands in contrast to the situation in Eurasia. There, ape diversity was high. Furthermore, several Eurasian ape fossils show morphological affinities with modern hominoids (apes). This has suggested to some

paleoanthropologists that the ancestors of modern African great apes recolonized Africa from Eurasia toward the end of the Miocene (Begun 2002). However, discoveries of Late Miocene hominoids like the Kenyan *Nakalipithecus* (9.9 million to 9.8 million years ago) and the Ethiopian *Chororapithecus* (10.7 million to 10.1 million years ago) fuel an alternative hypothesis—namely that African hominoid diversity was maintained throughout the Miocene and that one of these taxa might, in fact, be the last common ancestor of extant African apes (Kunimatsu et al. 2007). The previously underappreciated diversity of Late Miocene apes in Africa might be due to poor sampling of the fossil record in Africa.

## Eurasian Ape Diversity

With the establishment of the *Gomphotherium* Landbridge (a result of the closure of the Eastern Mediterranean seaway; Rögl 1999), the Middle Miocene was an exciting time for hominoid radiations outside of Africa (see Figure 8.20). Eurasian hominoid species exploited their environments in many different ways in the Miocene. Food exploitation ranged from soft-fruit feeding in some taxa to hard-object feeding in others, in part owing to seasonal fluctuations and the necessary adoptions of fallback foods (DeMiguel et al. 2014). For example, the molars of *Oreopithecus bambolii* (Family Hominidae) have relatively long lower-molar shearing crests, suggesting that this hominoid was very folivorous (Ungar and Kay 1995). Associated with variation in diet, there is great variation in the degree to which cranial features (e.g., zygomatic bone or supraorbital tori) are developed across the many taxa (Cameron 1997); however, Middle Miocene fossils tend to exhibit relatively thick molar enamel and relatively robust jaws (Andrews and Martin 1991).

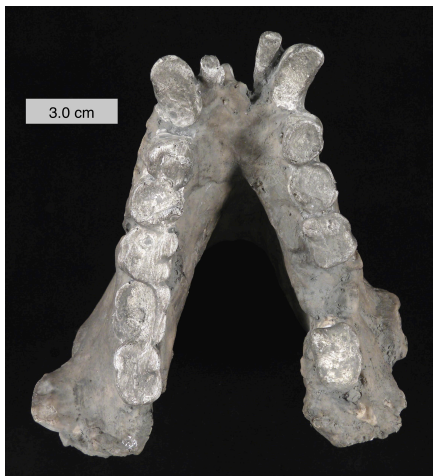


Figure 8.22 Cast of the mandible of *Gigantopithecus blacki*.

One of the most extreme examples of ape robusticity is the Asian hominoid, *Gigantopithecus* (Table 8.1). Known only from teeth and jaws (e.g., Figure 8.22), this ape probably weighed as much as 270 kg (595 lbs.) and was likely the largest primate ever (Bocherens et al. 2017). Because of unique features of its teeth (including molarized premolars and patterns of wear) and its massive size, it has been reconstructed as a bamboo specialist, somewhat like the modern panda. Small silica particles (phytoliths) from grasses have been found stuck to the molars of *Gigantopithecus* (Ciochon et al. 1990). Recent studies evaluating the carbon isotope composition of the enamel sampled from *Gigantopithecus* teeth suggest that this ape exploited a wide range of vegetation, including fruits, leaves, roots, and bamboo (Bocherens et al. 2017).

In Spain, the cranium with upper dentition, part of a mandible, and partial skeleton of *Pliobates* (Family Pliobatidae), a small-bodied ape (4–5 kg; 9–11 lbs.), was discovered in deposits dating to 11.6 million years ago (Alba et al. 2015). The authors of the study reconstructed this European catarrhine as a frugivore that overlapped in relative brain size with modern cercopithecoids. The fossilized postcrania of *Pliobates* suggest that this ape might have had a unique style of locomotion, including the tendency to walk across the branches of trees with its palms facing downward and flexible wrists that permitted rotation of the forearm during climbing. However, the anatomy of the distal humerus differs from those of living apes in ways that suggest that *Pliobates* was less efficient at stabilizing its elbow while suspended (Benefit and McCrossin 2015). Two other recently described apes from Spain, *Pierolapithecus* and *Anoiapithecus*, are known from relatively complete skeletons. *Pierolapithecus* had a very projecting face and thick molar enamel as well as some skeletal features that suggest (albeit controversially) a less suspensory locomotor style than in extant apes (Moyà-Solà et al. 2004). In contrast to *Pierolapithecus*, the slightly younger *Anoiapithecus* has a very flat face (Moyà-Solà et al. 2009).



Postcranial evidence for suspensory or well-developed orthograde behaviors in apes does not appear until the Late Miocene of Europe. Primary evidence supporting these specialized locomotor modes includes the relatively short lumbar vertebrae of *Oreopithecus* (Figure 8.23) and *Dryopithecus* (Maclatchy 2004). The Late Miocene saw the extinction of most of the Eurasian hominoids in an event referred to as the Vallesian Crisis (Agustí et al. 2003). Among the latest surviving hominoid taxa in Eurasia were *Oreopithecus* and *Gigantopithecus*, the latter of which held out until the Pleistocene in Asia and was probably even sympatric with *Homo erectus* (Cachel 2015).

## The Origins of Extant Apes

The fossil record of the extant apes is somewhat underwhelming: it ranges from being practically nonexistent for some taxa (e.g., chimpanzees) to being a little better for others (e.g., humans). There are many possible reasons for these differences in fossil abundance, and many are associated with the environmental conditions necessary for the fossilization of bones. One way to understand the evolution of extant apes that is not so dependent on the fossil record is via molecular evolutionary analyses. This can include counting up the differences in the genetic sequence between two closely related species to estimate the amount of time since these species shared a common ancestor. This is called a molecular clock, and it is often calibrated using fossils of known absolute age that stand in for the last common ancestor of a particular clade. Molecular clock estimates have placed the split between Hylobatidae and Hominidae between 19.7 million and 24.1 million years ago, followed by an African ape and Asian ape split between 15.7 million and 19.3 million years ago, and, finally, with the more recent radiation of Hylobatidae into its current genera between 6.4 million and 8 million years ago (Israfil et al. 2011).



Figure 8.23 Skeleton of *Oreopithecus bambolii*.

## Lesser Ape Origins and Fossils

Unfortunately, the fossil record for the lesser apes is meager, particularly in Miocene deposits. One possible early hylobatid is *Laccopithecus robustus*, a Late Miocene catarrhine from China (Harrison 2016). Although it does share some characteristics with modern gibbons and siamangs (including an overall small body size and a short face), *Laccopithecus* most likely represents a primitive stem catarrhine and is therefore distantly related to extant apes (Jablonski and Chaplin 2009). A more likely candidate for the hylobatid stem is another Late Miocene taxon from China, *Yuanmoupithecus xiaoyuan* (Table 8.1). Interpretation of its phylogenetic standing, however, is complicated by contradicting dental features—some of them quite primitive—which some believe best place *Yuanmoupithecus* as a stem hylobatid (Harrison 2016). The history of Hylobatidae becomes clearer in the Pleistocene, with fossils representing extant genera.

## Great Ape Origins and Fossils

The most extensive fossil record of a modern great ape is that of our own genus, *Homo*. The evolution of our own species will be covered in the next chapter. The evolutionary history of the Asian great ape, the orangutan (*Pongo*), is becoming clearer. Today, orangutans are found only on the islands of Borneo and Sumatra. However, Pleistocene-aged teeth, attributed to *Pongo*, have been found in Cambodia, China, Laos, Peninsular Malaysia, and Vietnam—demonstrating the vastness of the orangutan’s previous range (Ibrahim et al. 2013; Wang et al. 2014). *Sivapithecus* from the Miocene of India and Pakistan is represented by many specimens, including parts of the face. *Sivapithecus* is very similar to *Pongo*, especially in the face, and it probably is closely related to ancestral orangutans (Pilbeam 1982). Originally, jaws and teeth belonging to the former genus *Ramapithecus* were thought to be important in the origin of humans (Simons 1961), but now these are recognized as specimens of *Sivapithecus* (Kelley 2002). Postcranial bones of *Sivapithecus*, however, suggest a more generalized locomotor mode—including terrestrial locomotion—than seen in *Pongo* (Pilbeam et al. 1990).

In Africa, the first fossil to be confidently attributed to *Pan*, and known to be the earliest evidence of a chimpanzee, was described based on teeth found in Middle Pleistocene deposits in the Eastern Rift Valley of Kenya (McBrearty and Jablonski 2005). Paleoenvironmental reconstructions of this locality suggest that this early chimpanzee was living in close proximity to early *Homo* in a closed-canopy wooded habitat. Similarly, fossil teeth and mandibular remains attributed to two species of Middle-Late Miocene apes—*Chororapithecus abyssinicus* (from Ethiopia; Suwa et al. 2007) and *Nakalipithecus nakayamai* (from Kenya; Kanimatsu et al. 2007)—have been suggested as basal members of the gorilla clade.

Clearly, more work is needed to fill in the large gaps in the fossil record of the nonhuman great apes. The 20th century witnessed the discovery of many hominin fossils in East Africa, which have been critical for improving our understanding of human evolution. While 21st-century conservationists fight to prevent the extinction of the living great apes, perhaps efforts by 21st-century paleoanthropologists will yield the evolutionary story of these, our closest relatives.

### Review Questions

- Compare three major hypotheses about primate origins, making reference to each one’s key ecological reason for primate uniqueness.
- Explain how changes in temperature, rainfall, and vegetation led to major changes in primate biogeography over the Early Tertiary.
- List some euprimate features that plesiadapiforms have and some that they lack.
- Contrast adapoids and omomyoids in terms of life habits.
- Describe one piece of evidence for each of the adapoid, omomyoid, and tarsier origin hypotheses for anthropoids.
- Discuss the biogeography of the origins of African great apes and orangutans using examples from the Miocene ape fossil record.

## Key Terms

**Adapoidea:** Order: Primates. One of the earliest groups of euprimates (true primates; earliest records from the early Eocene).

**Anthropoids:** Group containing monkeys and apes, including humans.

**Auditory bulla:** The rounded bony floor of the middle ear cavity.

**Bilophodonty:** Dental condition in which the cusps of molar teeth form ridges (or lophs) separated from each other by valleys (seen, e.g., in modern Old World monkeys).

**Catarrhines:** Order: Primates; Suborder: Anthropoidea; Infraorder: Catarrhini. Group containing Old World monkeys and apes, including humans.

**Clade:** Group containing all of the descendants of a single ancestor. A portion of a phylogenetic tree represented as a bifurcation (node) in a lineage and all of the branches leading forward in time from that bifurcation.

**Convergent evolution:** The independent evolution of a morphological feature in animals not closely related (e.g., wings in birds and bats).

**Crown group:** Smallest monophyletic group (clade) containing a specified set of extant taxa and all descendants of their last common ancestor.

**Diagnosis:** The features that allow you to recognize a group.

**Diastema:** Space between adjacent teeth.

**Diffuse coevolution:** The ecological interaction between whole groups of species (e.g., primates) with whole groups of other species (e.g., fruiting trees).

**Ectotympanic:** Bony ring or tube that holds the tympanic membrane (eardrum).

**Euprimates:** Order: Primates. True primates or primates of modern aspect.

**Haplorhines:** Group containing catarrhines, platyrrhines, and tarsiers.

**Hominins:** Modern humans and any extinct relatives more closely related to us than to chimpanzees.

**Mandibular symphysis:** Fibrocartilaginous joint between the left and right mandibular segments, located in the midline of the body.

**Old World:** Africa and Eurasia.

**Omomyoidea:** Order: Primates; Superfamily: Omomyoidea. One of the earliest groups of euprimates (true primates; earliest record in the early Eocene).

**Petrosal bone:** Petrous portion of the temporal bone. It houses the inner ear apparatus, among other things.

**Plagiaulacoid:** Dental condition where at least one of the lower cheek-teeth (molars or premolars) is a laterally compressed blade.

**Platyrrhines:** Order: Primates; Suborder: Anthropoidea; Infraorder: Platyrrhini. Group containing New World monkeys.

**Plesiadapiforms:** Order: Plesiadapiformes. Archaic primates or primate-like placental mammals (Early Paleocene–Late Eocene).

**Stem:** Taxa are basal to a given crown group but are more closely related to the crown group than to the closest living sister taxon of the crown group.

**Strepsirrhines:** Order: Primates; Suborder: Stresirrhini. Group containing lemurs, lorises, and galagos (does not include tarsiers).

**Toothcomb:** Dental condition found in modern strepsirrhines in which the lower incisors and canines are laterally compressed and protrude forward at a nearly horizontal inclination. This structure is used in grooming.

## About the Authors

### Jonathan Perry



Jonathan Perry

Jonathan Perry was trained as a paleontologist and primatologist at the University of Alberta, Duke University, and Stony Brook University. His research focuses on the relationship between food, feeding, and craniodental anatomy in primates both living and extinct. This work includes primate feeding behavior, comparative anatomy, biomechanics, and field paleontology. For the past six years, he has taught courses on primate evolution at the undergraduate and graduate level.

### Stephanie Canington



Stephanie Canington

Stephanie Canington is a Ph.D. student. Her current research is on the links between food properties, feeding behavior, and jaw morphology in lemurs that live in varying forms of captivity.

## For Further Exploration

Beard, Chris 2004. *The Hunt for the Dawn Monkey: Unearthing the Origins of Monkeys, Apes, and Humans*. Berkeley: University of California Press.

Begun, David R. 2010. Miocene Hominids and the Origins of the African Apes and Humans. *Annual Review of Anthropology* 39: 67–84.

- Fleagle, John G. 2013. *Primate Adaptation and Evolution*. Third edition. San Diego, CA: Academic Press.
- Gebo, Daniel L., ed. 1993. *Postcranial Adaptations in Nonhuman Primates*. Dekalb: Northern Illinois University Press.
- Godfrey, Laurie R., and William L. Jungers. 2002. Quaternary Fossil Lemurs. In *The Primate Fossil Record*, edited by Walter C. Hartwig, 97–121. Cambridge: Cambridge University Press.
- Godinot, Marc. 2006. Lemuriform Origins as Viewed from the Fossil Record. *Folia Primatologica* 77 (6): 446–464.
- Kay, Richard F. 2018. 100 Years of Primate Paleontology. *American Journal of Physical Anthropology* 165 (4): 652–676.
- Marivaux, Laurent. 2006. The Eosimiid and Amphipithecoid Primates (Anthropoidea) from the Oligocene of the Bugti Hills (Balochistan, Pakistan): New Insight into Early Higher Primate Evolution in South Asia. *Palaeovertebrata, Montpellier* 34 (1–2): 29–109.
- Martin, R. D. 1990. *Primate Origins and Evolution, a Phylogenetic Reconstruction*. Princeton: Princeton University Press.
- Rose, Kenneth D., Marc Godinot, and Thomas M. Bown. 1994. The Early Radiation of Euprimates and the Initial Diversification of Omomyidae. In *Anthropoid Origins: The Fossil Evidence*, edited by John G. Fleagle and Richard F. Kay, 1–28. New York: Plenum Press.
- Ross, Callum F. 1999. How to Carry Out Functional Morphology. *Evolutionary Anthropology* 7 (6): 217–222.
- Seiffert, Erik R. 2012. Early Primate Evolution in Afro-Arabia. *Evolutionary Anthropology: Issues, News, and Reviews* 21: 239–253.
- Szalay, Frederic S., and Eric Delson. 1979. *Evolutionary History of the Primates*. New York: Academic Press.
- Ungar, Peter S. 2002. Reconstructing the Diets of Fossil Primates. In *Reconstructing Behavior in the Primate Fossil Record*, edited by Joseph Plavcan, Richard F. Kay, William Jungers, and Carel P. van Schaik, 261–296. New York: Kluwer Academic/Plenum Publishers.

## References

- Agustí, J., A. Sanz de Siria, and M. Garcés M. 2003. Explaining the End of the Hominoid Experiment in Europe. *Journal of Human Evolution* 45 (2): 145–153.
- Alba, David M., Sergio Almécija, Daniel DeMiguel, Josep Fortuny, Miriam Pérez de los Ríos, Marta Pina, Josep M. Robles, and Salvador Moyà-Solà. 2015. Miocene Small-Bodied Ape from Eurasia Sheds Light on Hominoid Evolution. *Science* 350 (6,260): aab2625.
- Andrews, Peter, and Lawrence Martin. 1991. Hominoid Dietary Evolution. *Philosophical Transactions of the Royal Society of London B: Biological Sciences* 334 (1,270): 199–209.
- Antoine, Pierre-Oliver, Laurent Marivaux, Darren A. Croft, Guillaume Billet, Morgan Ganerød, Carlos Jaramillo, Thomas Martin, et al. 2012. Middle Eocene Rodents From Peruvian Amazonia Reveal the Pattern and Timing of Caviomorph Origins and Biogeography. *Proceedings of the Royal Society B: Biological Sciences* 279 (1,732): 1,319–1,326.
- Beard, K. Christopher. 1990. Gliding Behaviour and Palaeoecology of the Alleged Primate Family Paromomyidae (Mammalia, Dermoptera). *Nature* 345 (6,273): 340–341.



- . 2002. Basal anthropoids. In *The Primate Fossil Record*, edited by William C. Hartwig, 133–150. Cambridge: Cambridge University Press.
- Beard, K. Christopher, and R. D. E. MacPhee. 1994. Cranial Anatomy of *Shoshonius* and the Antiquity of Anthroipoidea. In *Anthropoid Origins: The Fossil Evidence*, edited by John G. Fleagle and Richard F. Kay, 55–98. New York: Plenum Press.
- Beard, K. Christopher, Laurent Marivaux, Soe Thura Tun, Aung Naing Soe, Yaowalak Chaimanee, Wanna Htoon, Bernard Marandat, Htun Htun Aung, and Jean-Jacques Jaeger. 2007. New Sivaladapid Primates From the Eocene Pondaung Formation of Myanmar and the Anthropoid Status of Amphipithecidae. *Bulletin of Carnegie Museum of Natural History* 39: 67–76.
- Beard, K. Christopher, Tao Qi, Mary R. Dawson, Banyue Wang, and Chuankuei Li. 1994. A Diverse New Primate Fauna From Middle Eocene Fissure-Fillings in Southeastern China. *Nature* 368 (6,472): 604–609.
- Beard, K. Christopher, Yongsheng Tong, Mary R. Dawson, Jingwen Wang, and Xueshi Huang. 1996. Earliest Complete Dentition of an Anthropoid Primate From the Late Middle Eocene of Shanxi Province, China. *Science* 272 (5,258): 82–85.
- Beecher, Robert M. 1983. Evolution of the Mandibular Symphysis in Notharctinae (Adapidae, Primates). *International Journal of Primatology* 4 (1): 99–112.
- Begun, David R. 2002. European Hominoids. In *The Primate Fossil Record*, edited by William C. Hartwig, 339–368. Cambridge: Cambridge University Press.
- . 2003. Planet of the Apes. *Scientific American* 289 (2): 74–83.
- . 2007. Fossil Record of Miocene Hominoids. In *Handbook of Paleoanthropology*, edited by Winfried Henke and Ian Tattersall, 921–977. New York: Springer.
- Benefit, Brenda R., and Monte L. McCrossin. 1997. Earliest Known Old World Monkey Skull. *Nature* 388 (6,640): 368–371.
- . 2015. A Window Into Ape Evolution. *Science* 350 (6,260): 515–516.
- Bloch, Jonathan I., and David M. Boyer. 2002. Grasping Primate Origins. *Science* 298 (5,598): 1,606–1,610.
- . 2007. New Skeletons of Paleocene-Eocene Plesiadapiformes: A Diversity of Arboreal Positional Behaviors in Early Primates. In *Primate Origins: Adaptations and Evolution*, edited by Matthew J. Ravosa and Marian Dagosto, 535–581. New York: Springer.
- Bloch, Jonathan I., and Mary T. Silcox. 2001. New Basicrania of Paleocene-Eocene *Ignacius*: Re-evaluation of the Plesiadapiform-Dermopteran Link. *American Journal of Physical Anthropology* 116 (3): 184–198.
- . 2006. Cranial Anatomy of the Paleocene Plesiadapiform *Carpolestes simpsoni* (Mammalia, Primates) Using Ultra High-Resolution X-ray Computed Tomography, and the Relationships of Plesiadapiforms to Euprimates. *Journal of Human Evolution*: 50 (1), 1–35.
- Bloch, Jonathan I., Mary T. Silcox, Doug M. Boyer, and Eric J. Sargis. 2007. New Paleocene Skeletons and the Relationship of Plesiadapiforms to Crown-Clade Primates. *Proceedings of the National Academy of Sciences of the United States of America* 104 (4): 1,159–1,164.
- Blue, Kathleen T., Monte L. McCrossin, and Brenda R. Benefit. 2006. Terrestriality in a Middle Miocene Context: *Victoriapithecus* from Maboko, Kenya. In *Human Origins and Environmental Backgrounds*, edited by Hidemi Ishida, Russell Tuttle, Martin Pickford, Naomichi Ogiwara, and Masato Nakatsukasa, 45–58. New York: Springer.
- Bocherens, Hervé, Friedemann Schrenk, Yaowalak Chaimanee, Ottmar Kullmer, Doris Mörike, Diana Pushkina, and Jean-

- Jacques Jaeger. 2017. Flexibility of Diet and Habitat in Pleistocene South Asian Mammals: Implications for the Fate of the Giant Fossil Ape *Gigantopithecus*. *Quaternary International* 434 (A): 148–155.
- Bond, Mariano, Marcelo F. Tejedor, Kenneth E. Campbell Jr., Laura Chornogubsky, Nelson Novo, and Francisco Goin. 2015. Eocene Primates of South America and the African Origins of New World Monkeys. *Nature* 520 (7,548): 539–541.
- Bown, T. M., and M. J. Kraus. 1988. Geology and Paleoenvironment of the Oligocene Jebel Qatrani Formation and Adjacent Rocks, Fayum Depression, Egypt. Professional Paper, 1452. Washington D.C.: U.S. Geological Survey Professional Papers.
- Cachel, Susan. 2015. *Fossil Primates*. Vol. 69. Cambridge: Cambridge University Press.
- Cameron, David W. 1997. A Revised Systematic Scheme for the Eurasian Miocene Fossil Hominidae. *Journal of Human Evolution* 33 (4): 449–477.
- Cartmill, Matt. 1972. Arboreal Adaptations and the Origin of the Order Primates. In *The Functional and Evolutionary Biology of Primates*, edited by Russell Tuttle, 97–122. Chicago: Aldine-Atherton.
- . 1974. Rethinking Primate Origins. *Science* 184 (4,135): 436–443.
- Cartmill, Matt, and Richard F. Kay. 1978. Craniodental Morphology, Tarsier Affinities, and Primate Suborders. In *Recent Advances in Primatology: Evolution*, edited by D. J. Chivers and K. A. Joysey, 205–214. London: Academic Press.
- Casnovas-Vilar, Isaac, David M. Alba, Miguel Garcés, Josep M. Robles, and Salvador Moyà-Solà. 2011. Updated chronology for the Miocene hominoid radiation in Western Eurasia. *Proceedings of the National Academy of Sciences* 108 (14): 5,554–5,559. <https://doi.org/10.1073/pnas.1018562108>
- Chaimanee, Yaowalak, Olivier Chavasseau, K. Christopher Beard, Aung Aung Kyaw, Aung Naing Soe, Chit Sein, Vincent Lazzari, et al. 2012. Late Middle Eocene Primate from Myanmar and the Initial Anthropoid Colonization of Africa. *Proceedings of the National Academy of Sciences of the United States of America* 109 (26): 10,293–10,297.
- Chester, Stephen G. B., Jonathan I. Bloch, Doug M. Boyer, and William A. Clemens. 2015. Oldest Known Euarchontan Tarsals and Affinities of Paleocene *Purgatorius* to Primates. *Proceedings of the National Academy of Sciences of the United States of America* 112 (5): 1,487–1,492.
- Ciochon, Russell L., and Gregg F. Gunnell. 2002. Chronology of Primate Discoveries in Myanmar: Influences on the Anthropoid Origins Debate. *Yearbook of Physical Anthropology* 45: 2–35.
- Ciochon, R. L., D. R. Piperno, and R. G. Thompson. 1990. Opal Phytoliths Found on the Teeth of the Extinct Ape *Gigantopithecus blacki*: Implications for Paleodietary Studies. *Proceedings of the National Academy of Sciences of the United States of America* 87 (20): 8,120–8,124.
- Clemens, William A. 2004. *Purgatorius* (Plesiadapiformes, Primates?, Mammalia), a Paleocene Immigrant Into Northeastern Montana: Stratigraphic Occurrences and Incisor Proportions. *Bulletin of Carnegie Museum of Natural History* 36: 3–13.
- Cooke, Siobhán B., Justin T. Gladman, Lauren B. Halenar, Zachary S. Klukkert, and Alfred L. Rosenberger. 2016. The Paleobiology of the Recently Extinct Platyrrhines of Brazil and the Caribbean. In *Molecular Population Genetics, Evolutionary Biology and Biological Conservation of Neotropical Primates*, edited by Manuel Ruiz-Garcia and Joseph Mark Shostell, 41–89. New York: Nova Publishers.
- DeLeon, Valerie B., Timothy D. Smith, and Alfred L. Rosenberger. 2016. Ontogeny of the Postorbital Region in Tarsiers and Other Primates. *Anatomical Record: Advances in Integrative Anatomy and Evolutionary Biology* 299 (12): 1,631–1,645.

- DeMiguel, Daniel, David M. Alba, and Salvador Moyà-Solà. 2014. Dietary specialization during the evolution of western Eurasian hominoids and the extinction of European great apes. *PLoS ONE* 9 (5): e97442. <https://doi.org/10.1371/journal.pone.0097442>
- Dunn, Rachel H., Kenneth D. Rose, Rajendra Rana, Kishore Kumar, Ashok Sahni, and Thierry Smith. 2016. New Euprimate Postcrania From the early Eocene of Gujarat, India, and the Strepsirrhine–Haplorhine Divergence. *Journal of Human Evolution* 99: 25–51.
- Fleagle, John G. 2013. *Primate Adaptation and Evolution*, Third Edition. San Diego, CA: Academic Press.
- Fleagle, John G., and Richard F. Kay. 1994. *Anthropoid Origins*. New York: Plenum Press.
- Fleagle, John G., and Elwyn L. Simons. 1995. Limb Skeleton and Locomotor Adaptations of *Apidium phiomense*, an Oligocene Anthropoid from Egypt. *American Journal of Physical Anthropology* 97 (3): 235–289.
- Franzen, Jens Lorenz. 1994. The Messel Primates and Anthropoid Origins. In *Anthropoid Origins: The Fossil Evidence*, edited by John G. Fleagle and Richard F. Kay, 99–122. New York: Plenum Press.
- Franzen, Jens Lorenz, Phillip D. Gingerich, Jörg Habersetzer, Jørn Hurum, von Wighart Koenigswald, and B. Holly Smith. 2009. Complete Primate Skeleton From the Middle Eocene of Messel in Germany: Morphology and Paleobiology. *PLoS ONE* 4 (5): e5723.
- Gebo, Daniel L., and Elwyn L. Simons. 1987. Morphology and Locomotor Adaptations of the Foot in Early Oligocene Anthropoids. *American Journal of Physical Anthropology* 74 (1): 83–101.
- Gebo, Daniel L., Marian Dagosto, K. Christopher Beard, Tao Qi, and Jingwen Wang. 2000. The Oldest Known Anthropoid Postcranial Fossils and the Early Evolution of Higher Primates. *Nature* 404 (6,775): 276–278.
- Gingerich, P. D. 1980. Eocene Adapidae, Paleobiogeography, and the Origin of South American Platyrrhini. In *Evolutionary Biology of the New World Monkeys and Continental Drift*, edited by Russell L. Ciochon and A. Brunetto Chiarelli, 123–138. New York: Plenum Press.
- Godfrey, Laurie R., and William L. Jungers. 2002. Quaternary Fossil Lemurs. In *The Primate Fossil Record*, edited by Walter C. Hartwig, 97–121. Cambridge: Cambridge University Press.
- Godinot, Marc. 2006. Lemuriform Origins As Viewed From the Fossil Record. *Folia Primatologica* 77 (6): 446–464.
- Gregory, William K. 1920. On the Structure and Relations of *Notharctus*, an American Eocene Primate. *Memoirs of the American Museum of Natural History* (N.S.) 3 (2): 45–243.
- Gunnell, Gregg F., Doug M. Boyer, Anthony R. Friscia, Steven Heritage, Frederik Kyalo Manthi, Ellen R. Miller, Hesham M. Sallam, Nancy B. Simmons, Nancy J. Stevens, and Erik R. Seiffert. 2018. Fossil Lemurs From Egypt and Kenya Suggest an African Origin for Madagascar's Aye-aye. *Nature Communications* 9 (3,193): 1–12.
- Harrison, Terry. 2010. Apes Among the Tangled Branches of Human Origins. *Science* 327 (5,965): 532–534.
- . 2016. The Fossil Record and Evolutionary History of Hylobatids. In *Evolution of Gibbons and Siamang*, edited by Ullrich H. Reichard, Hirohisa Hirai, and Claudia Barelli, 91–110. New York: Springer.
- Ibrahim, Yasamin Kh., Lim Tze Tshen, Kira E. Westaway, Earl of Cranbrook, Louise Humphrey, Ross Fatimah Muhammad, Jian-xin Zhao, and Lee Chai Peng. 2013. First Discovery of Pleistocene Orangutan (*Pongo* sp.) Fossils in Peninsular Malaysia: Biogeographic and Paleoenviromental Implications. *Journal of Human Evolution* 65 (6): 770–797.
- Israfil, Hulya, Sarah M. Zehr, Alan R. Mootnick, Maryellen Ruvolo, and Michael E. Steiper. 2011. Unresolved molecular

- phylogenies of gibbons and siamangs (Family: Hylobatidae) based on mitochondrial, Y-linked, and X-linked loci indicate a rapid Miocene radiation or sudden vicariance event. *Molecular Phylogenetics and Evolution* 58 (3): 447–455.
- Jablonski, Nina G., and George Chaplin. 2009. The Fossil Record of Gibbons. In *The Gibbons*, edited by Danielle Whittaker and Susan Lappan, 111–130. New York: Springer.
- Jones, F. Wood. 1916. *Arboreal Man*. London: Edward Arnold.
- Kay, Richard F. 1977. Diets of Early Miocene African Hominoids. *Nature* 268 (5,621): 628–630.
- . 2015. Biogeography in Deep Time: What Do Phylogenetics, Geology, and Paleoclimate Tell Us about Early Platyrrhine Evolution? *Molecular Phylogenetics and Evolution* 82 (B): 358–374.
- Kay, Richard F., and John G. Fleagle. 2010. Stem Taxa, Homoplasy, Long Lineages, and the Phylogenetic Position of *Dolichocebus*. *Journal of Human Evolution* 59 (2): 218–222.
- Kay, Richard F., Jonathan M. G. Perry, Michael Malinzak, Kari L. Allen, E. Christopher Kirk, J. Michael Plavcan, and John G. Fleagle. 2012. Paleobiology of Santacrucian Primates. In *Early Miocene Paleobiology in Patagonia: High-Latitude Paleocommunities of the Santa Cruz Formation*, edited by Sergio F. Vizcaíno, Richard F. Kay, and M. Susana Bargo, 306–330. Cambridge: Cambridge University Press.
- Kay, Richard F., Daniel O Schmitt, Christopher J. Vinyard, Jonathan M. G. Perry, Nobuo Shigehara, Masanaru Takai, and Naoko Egi. 2004. The paleobiology of Amphipithecidae, South Asian late Eocene primates. *Journal of Human Evolution* 46 (1): 3–25.
- Kay, Richard F., and Elwyn L. Simons. 1980. The Ecology of Oligocene African Anthropoidea. *International Journal of Primatology* 1 (1): 21–37.
- Kay, Richard F., Richard W. Thorington, and Peter Houde. 1990. Eocene Plesiadapiform Shows Affinities With Flying Lemurs Not Primates. *Nature* 345 (6,273): 342–344.
- Kelley, Jay. 2002. The Hominoid Radiation in Asia. In *The Primate Fossil Record*, edited by Walter C. Hartwig, 369–384. Cambridge: Cambridge University Press.
- Kirk, E. Christopher, and Elwyn L. Simons. 2001. Diets of fossil primates From the Fayum Depression of Egypt: A Quantitative Analysis of Molar Shearing. *Journal of Human Evolution* 40 (3): 203–229.
- Kirk, E. Christopher, and Blythe A. Williams. 2011. New Adapiform Primate of Old World Affinities From the Devil's Graveyard Formation of Texas. *Journal of Human Evolution* 61 (2): 156–168.
- Krause, David W. 1991. Were Paromomyids Gliders? Maybe, Maybe Not. *Journal of Human Evolution* 21 (3): 177–188.
- Kunimatsu, Yutaka, Masato Nakatsukasa, Yoshihiro Sawada, Tetsuya Sakai, Masayuki Hyodo, Hironobu Hyodo, Tetsumaru Itaya, et al. 2007. A New Late Miocene Great Ape From Kenya and Its Implications for the Origins of African Great Apes and Humans. *Proceedings of the National Academy of Sciences of the United States of America* 104 (49): 19,220–19,225.
- Maclatchy, Laura. 2004. The Oldest Ape. *Evolutionary Anthropology: Issues, News, and Reviews* 13 (3): 90–103.
- Marivaux, Laurent, Yaowalak Chaimanee, Stéphane Ducrocq, Bernard Marandat, Jean Sudre, Aung Naing Soe, Soe Thura Tun, Wanna Htoon, and Jean-Jacques Jaeger. 2003. The Anthropoid Status of a Primate from the Late Middle Eocene Pondaung Formation (Central Myanmar): Tarsal Evidence. *Proceedings of the National Academy of Sciences of the United States of America* 100 (23): 13,173–13,178.

- Marivaux, Laurent, Anusha Ramdarshan, El Mabrouk Essid, Wissem Marzougui, Hayet Khayati Ammar, Renaud Lebrun, Bernard Marandat, Gilles Merzeraud, Rodolphe Tabuce, and Monique Vianey-Liaud. 2013. *Djebelemur*, a Tiny Pre-ToothCombed Primate from the Eocene of Tunisia: A Glimpse into the Origin of Crown Strepsirrhines. *PLoS ONE* 8 (12): e80778.
- Martin, R. D. 1968. Towards a New Definition of Primates. *Man* (N.S.) 3 (3): 377–401.
- . 1972. Adaptive Radiation and Behaviour of the Malagasy Primates. *Philosophical Transactions of the Royal Society B: Biological Sciences* 264 (862): 295–352.
- . 1990. *Primate Origins and Evolution, a Phylogenetic Reconstruction*. Princeton: Princeton University Press.
- McBrearty, Sally, and Nina G. Jablonski. 2005. First Fossil Chimpanzee. *Nature* 437 (7,055): 105–108.
- Michel, Lauren A., Daniel J. Peppe, James A. Lutz, Stephen G. Driese, Holly M. Dunsworth, William E. H. Harcourt-Smith, William H. Horner, Thomas Lehmann, Sheila Nightingale, and Kieran P. McNulty. 2014. Remnants of an Ancient Forest Provide Ecological Context for Early Miocene Fossil Apes. *Nature Communications* 5: 3,236.
- Miller, E. R., B. R. Benefit, M. L. McCrossin, J. M. Plavcan, M. G. Leakey, A. N. El-Barkooky, M. A. Hamdan, M. K. A. Gawad, S. M. Hassan, and E. L. Simons. 2009. Systematics of Early and Middle Miocene Old World Monkeys. *Journal of Human Evolution* 57 (3): 195–211.
- Moyà-Solà, Salvadore, David M. Alba, Sergio Almécija, Isaac Casanovas-Vilar, Meike Köhler, Soledad De Esteban-Trivigno, Josep M. Robles, Jordi Galindo, and Josep Fortuny. 2009. A Unique Middle Miocene European Hominoid and the Origins of the Great Ape and Human Clade. *Proceedings of the National Academy of Sciences of the United States of America* 106 (24): 9,601–9,606.
- Moyà-Solà, Salvador, Meike Köhler, David M. Alba, Isaac Casanovas-Vilar, and Jordi Galindo. 2004. *Pierolapithecus catalaunicus*, a New Middle Miocene Great Ape from Spain. *Science* 306 (5,700): 1,339–1,344.
- Ni, Xijun, Daniel L. Gebo, Marian Dagosto, Jin Meng, Paul Tafforeau, John J. Flynn, and K. Christopher Beard. 2013. The Oldest Known Primate Skeleton and Early Haplorhine Evolution. *Nature* 498 (7,452): 60–64.
- Perry, Jonathan M. G., Richard F. Kay, Sergio F. Vizcaíno, and M. Susana Bargo. 2010. Tooth Root Size, Chewing Muscle Leverage, and the Biology of *Homunculus patagonicus* (Primates) From the Late Early Miocene of Patagonia. *Ameghiniana* 47 (3): 355–371.
- . 2014. Oldest Known Cranium of a Juvenile New World Monkey (Early Miocene, Patagonia, Argentina): Implications for the Taxonomy and the Molar Eruption Pattern of Early Platyrrhines. *Journal of Human Evolution* 74: 67–81.
- Pickford, Martin, Yves Coppens, Brigitte Senut, Jorge Morales, and José Braga. 2009. Late Miocene Hominoid from Niger. *Comptes Rendus Palevol* 8 (4): 413–425.
- Pilbeam, David. 1982. New Hominoid Skull Material from the Miocene of Pakistan. *Nature* 295 (5,846): 232–234.
- Pilbeam, David, Michael D. Rose, John C. Barry, and S. M. Ibrahim Shah. 1990. New *Sivapithecus* Humeri From Pakistan and the Relationship of *Sivapithecus* and *Pongo*. *Nature* 348 (6,298): 237–239.
- Rasmussen, D. Tab. 1990. Primate Origins: Lessons From a Neotropical Marsupial. *American Journal of Primatology* 22 (4): 263–277.
- Ravosa, Matthew J. 1996. Mandibular Form and Function in North American and European Adapidae and Omomyidae. *Journal of Morphology* 229 (2): 171–190.



- Rögl, Fred. 1999. Mediterranean and Paratethys Palaeogeography during the Oligocene and Miocene. In *Hominoid Evolution and Climatic Change in Europe*, edited by Jorge Agustí, Lorenzo Rook, and Peter Andrews, 8–22. Cambridge: Cambridge University Press.
- Rose, Kenneth D. 1975. The Carpolestidae: Early Tertiary Primates From North America. *Bulletin of the Museum of Comparative Zoology at Harvard University* 147: 1–74.
- . 2006. *The Beginning of the Age of Mammals*. Baltimore: Johns Hopkins University Press.
- Rose, Kenneth D., and Thomas M. Bown. 1984. Gradual Phyletic Evolution at the Generic Level in Early Eocene Omomyoid Primates. *Nature* 309 (5,965): 250–252.
- Rose, Kenneth D., Rachel H. Dunn, Kishor Kumar, Jonathan M. G. Perry, Kristen A. Prufrock, Rajendra S. Rana, and Thierry Smith. 2018. New Fossils From Tadkeshwar Mine (Gujarat, India) Increase Primate Diversity from the Early Eocene Cambay Shale. *Journal of Human Evolution* 122: 93–107.
- Rose, Kenneth D., and John M. Rensberger. 1983. Upper Dentition of *Ekgmowechashala* (Omomyoid Primate) From the John Day Formation, Oligo-Miocene of Oregon. *Folia Primatologica* 41: 102–111.
- Rosenberger, Alfred L. 2010. Platyrrhines, PAUP, Parallelism, and the Long Lineage Hypothesis: A Reply to Kay *et al.* (2008). *Journal of Human Evolution* 59 (2): 214–217.
- Ross, Callum F. 2000. Into the Light: The Origins of Anthrozoidea. *Annual Review of Anthropology* 29: 147–194.
- Ross, Callum F., and Richard F. Kay, eds. 2004. *Anthropoid Origins: New Visions*. New York: Kluwer Academic/Plenum Publishers.
- Russo, Gabrielle A. 2016. Comparative Sacral Morphology and the Reconstructed Tail Lengths of Five Extinct Primates: *Proconsul heseloni*, *Epipliothecus vindobonensis*, *Archaeolemur edwardsi*, *Megaladapis grandidieri*, and *Palaeopropithecus kelyus*. *Journal of Human Evolution* 90: 135–162.
- Schmid, Peter. 1979. Evidence of Microchoerine Evolution From Dielsdorf (Zürich Region, Switzerland): A Preliminary Report. *Folia Primatologica* 31 (4): 301–311.
- Seiffert, Erik R. 2012. Early Primate Evolution in Afro-Arabia. *Evolutionary Anthropology: Issues, News, and Reviews* 21 (6): 239–253.
- Seiffert, Erik R., Jonathan M. G. Perry, Elwyn L. Simons, and Doug M. Boyer. 2009. Convergent Evolution of Anthropoid-like Adaptations in Eocene Adapiform Primates. *Nature* 461 (7,267): 1,118–1,121.
- Seiffert, Erik R., Elwyn L. Simons, and Yousry Attia. 2003. Fossil Evidence for an Ancient Divergence of Lorises and Galagos. *Nature* 422 (6,930): 421–424.
- Seiffert, Erik R., Elwyn L. Simons, Doug M. Boyer, Jonathan M. G. Perry, Timothy M. Ryan, and Hesham M. Sallam. 2010. A Fossil Primate of Uncertain Affinities From the Earliest Late Eocene of Egypt. *Proceedings of the National Academy of Sciences of the United States of America* 107 (21): 9,712–9,717.
- Seiffert, Erik R., Elwyn L. Simons, and Cornelia V. M. Simons. 2004. Phylogenetic, Biogeographic, and Adaptive Implications of New Fossil Evidence Bearing on Crown Anthropoid Origins and Early Stem Catarrhine Evolution. In *Anthropoid Origins: New Visions*, edited by Callum F. Ross and Richard F. Kay, 157–182. New York: Kluwer/Plenum Publishing.
- Silcox, Mary T. 2001. A Phylogenetic Analysis of Plesiadapiformes and Their Relationship to Euprimates and to Other

Archontans. Ph.D. dissertation, Center for Functional Anatomy and Evolution, The Johns Hopkins University School of Medicine.

Simons, Elwyn L. 1961. The Phyletic Position of *Ramapithecus*. *Postilla* 57: 1–9.

---. 2001. The Cranium of *Parapithecus grangeri*, an Egyptian Oligocene Anthropoid Primate. *Proceedings of the National Academy of Sciences of the United States of America* 98 (4): 7,892–7,897.

---. 2004. The Cranium and Adaptations of *Parapithecus grangeri*, a Stem Anthropoid From the Fayum Oligocene of Egypt. In *Anthropoid Origins: New Visions*, edited by Callum F. Ross and Richard F. Kay, 183–204. New York: Kluwer/Plenum Publishing.

---. 2008. Eocene and Oligocene Mammals of the Fayum, Egypt. In *Elwyn Simons: A Search for Origins*, edited by John G. Fleagle and Christopher C. Gilbert, 87–105. New York: Springer.

Simons, Elwyn L., and D. Tab Rasmussen. 1994a. A Remarkable Cranium of *Plesiopithecus teras* (Primates, Prosimii) From the Eocene of Egypt. *Proceedings of the National Academy of Sciences of the United States of America* 91: 9,946–9,950.

Simons, Elwyn L., and D. Tab Rasmussen. 1994b. A Whole New World of Ancestors: Eocene Anthropoids From Africa. *Evolutionary Anthropology* 3 (4): 128–139.

---. 1996. Skull of *Catopithecus browni*, an Early Tertiary Catarrhine. *American Journal of Physical Anthropology* 100 (2): 261–292.

Simons, Elwyn L., and Erik R. Seiffert. 1999. A Partial Skeleton of *Proteopithecus sylviae* (Primates Anthropoidea): First Associated Dental and Postcranial Remains of an Eocene Anthropoid. *Comptes Rendus de l'Académie des Sciences, Paris* 329 (12): 921–927.

Simons, Elwyn L., Erik R. Seiffert, Timothy M. Ryan, and Yousry Attia. 2007. A Remarkable Female Cranium of the Early Oligocene Anthropoid *Aegyptopithecus zeuxis* (Catarrhini, Propliopithecidae). *Proceedings of the National Academy of Sciences of the United States of America* 104 (21): 8,731–8,736.

Simpson, George Gaylord. 1933. The “Plagiaulacoid” Type of Mammalian Dentition: A Study of Convergence. *Journal of Mammalogy* 14 (2): 97–107.

---. 1940. Review of the Mammal-Bearing Tertiary of South America. *Proceedings of the American Philosophical Society* 83 (5): 649–709.

---. 1967. The Tertiary Lorisiform Primates of Africa. *Bulletin of the Museum of Comparative Zoology at Harvard University* 136: 39–62.

Smith, G. Elliot. 1912. The Evolution of Man. *Smithsonian Institute Annual Report* 2012: 553–572.

Smith, Thierry, Kenneth D. Rose, and Philip D. Gingerich. 2006. Rapid Asia–Europe–North America Geographic Dispersal of Earliest Eocene Primate *Teilhardina* During the Paleocene–Eocene Thermal Maximum. *Proceedings of the National Academy of Sciences of the United States of America* 103 (30): 11,223–11,227.

Stehlin, Hans G. 1912. Die säugetiere des schweizerischen Eocaens. Siebenter teil, erst hälfte: *Adapis*. *Abhandlungen der Schweizerischen Paläontologischen Gesellschaft* 38: 1,165–1,298.

Strait, Suzanne G. 2001. Dietary Reconstruction of Small-Bodied Omomyoid Primates. *Journal of Vertebrate Paleontology* 21 (2): 322–334.

- Sussman, Robert W. 1991. Primate Origins and the Evolution of Angiosperms. *American Journal of Primatology* 23 (4): 209–223.
- Suwa, Gen, Reiko T. Kono, Shigehiro Katoh, Berhane Asfaw, and Yonas Beyene. 2007. A New Species of Great Ape From the Late Miocene Epoch in Ethiopia. *Nature* 448 (7,156): 921–924.
- Teaford, Mark F., Mary C. Maas, and Elwyn L. Simons. 1996. Dental Microwear and Microstructure in Early Oligocene Primates from the Fayum, Egypt: Implications for Diet. *American Journal of Physical Anthropology* 101 (4): 527–543.
- Ungar, Peter S., and Richard F. Kay. 1995. The Dietary Adaptations of European Miocene Catarrhines. *Proceedings of the National Academy of Sciences of the United States of America* 92 (12): 5,479–5,481.
- Wang, Cui-Bin, Ling-Xia Zhao, Chang-Zhu Jin, Yuan Wang, Da-Gong Qin, and Wen-Shi Pan. 2014. New Discovery of Early Pleistocene Orangutan Fossils From Sanhe Cave in Chongzuo, Guangxi, Southern China. *Quaternary International* 354: 68–74.
- Ward, C. V., A. Walker, and M. F. Teaford. 1991. *Proconsul* Did Not Have a Tail. *Journal of Human Evolution* 21 (3): 215–220.
- Wheeler, Brandon C. 2010. Community Ecology of the Middle Miocene Primates of La Venta, Colombia: The Relationship Between Ecological Diversity, Divergence Time, and Phylogenetic Richness. *Primates* 51 (2): 131–138.
- Williams, Blythe A., and Richard F. Kay. 1995. The Taxon Anthropoidea and the Crown Clade Concept. *Evolutionary Anthropology* 3 (6): 188–190.
- Williams, Blythe A., Richard F. Kay, and E. Christopher Kirk. 2010a. New Perspectives on Anthropoid Origins. *Proceedings of the National Academy of the United States of America* 107 (11): 4,797–4,804.
- Williams, Blythe A., Richard F. Kay, E. Christopher Kirk, and Callum F. Ross. 2010b. *Darwinius masillae* Is a European Middle Eocene Stem Strepsirrhine—A Reply to Franzen et al. *Journal of Human Evolution* 59: 567–573.

## Tables

**Table 8.1.** Major Families of Fossil Primates Discussed Here

<b>Broad Group</b>	<b>Family</b>	<b>Example Taxon</b>	<b>Approximate Age for Group <sup>1</sup></b>
Plesiadapiforms	Paromomyidae	<i>Ignacius</i>	Middle Paleocene–Late Eocene
	Carpolestidae	<i>Carpolestes</i>	Late Paleocene–Early Eocene
	Plesiadapidae	<i>Plesiadapis</i>	Late Paleocene–Early Eocene
Early Euprimates	Asiadapidae	<i>Asiadapis</i>	Early Eocene
	Cercamoniidae	<i>Donrussellia</i>	Early Eocene
	Omomyidae	<i>Teilhardina</i>	Early Eocene
	Caenopithecidae	<i>Darwinius</i>	Eocene
	Adapidae	<i>Notharctus</i>	Middle Eocene
	Sivaladapidae	<i>Sivaladapis</i>	Late Miocene
Early Anthropoids	Eosimiidae	<i>Eosimias</i>	Middle Eocene
	Amphipithecidae	<i>Amphipithecus</i>	Middle–Late Eocene
	Oligopithecidae	<i>Catopithecus</i>	Late Eocene
	Proteopithecidae	<i>Proteopithecus</i>	Late Eocene
	Parapithecidae	<i>Apidium</i>	Early Oligocene
	Propithecidae	<i>Aegyptopithecus</i>	Early Oligocene
	Homunculidae	<i>Homunculus</i>	Early–Middle Miocene
Later Anthropoids	Proconsulidae	<i>Proconsul</i>	Early Miocene
	Victoriapithecidae	<i>Victoriapithecus</i>	Middle Miocene
	Pliopithecidae	<i>Pliopithecus</i>	Middle–Late Miocene
	Hylobatidae	<i>Yuanmoupithecus</i>	Late Miocene
	Hominidae	<i>Gigantopithecus</i>	Late Miocene–Pleistocene

<sup>1</sup> Derived from Fleagle (2013).

**Table 8.2.** Morphological Comparisons Between Early Euprimates and Extant Primates

Group	Similarities to Strepsirrhines	Similarities to Haplorhines
Adapoids	<ul style="list-style-type: none"> <li>- Ring-shaped tympanic bone</li> <li>- Similar wrist and ankle bones</li> <li>- Similar molars</li> </ul>	<ul style="list-style-type: none"> <li>- Fusion of mandibular symphysis (in some adapoids and in all anthropoids but not in tarsiers)</li> <li>- Similarly small incisors</li> <li>- Sexual dimorphism in some taxa</li> </ul>
Omomyoids	<ul style="list-style-type: none"> <li>- Small and nocturnal</li> <li>- Unfused mandibular symphysis</li> <li>- Postorbital bar</li> </ul>	<ul style="list-style-type: none"> <li>- Large eyes</li> <li>- Tube-like tympanic bone (in some omomyoids and in catarrhines and tarsiers)</li> <li>- Pointy incisors</li> <li>- General skull proportions</li> <li>- Proportions of some ankle bones</li> <li>- “Leaping” femur (tarsiers)</li> </ul>

## Figure Attributions

Figure 8.1 Hypotheses about primate origins a derivative work by Jonathan M. G. Perry and Stephanie L. Canington is under a [CC BY-NC 4.0 License](#). [Includes [Garnett’s Galago](#) by [Ltshears](#), [CC BY-SA 3.0](#); [Nycticebus bancanus](#) by [Gunay M.E.](#), [CC BY-SA 4.0](#); [Anja réserve \(Madagascar\) – 06](#) by [Wayne77](#), [CC BY-SA 4.0](#)].

Figure 8.2 Primate family tree by Jonathan M. G. Perry is under a [CC BY-NC 4.0 License](#).

Figure 8.3 [Eocene Jay Matternes](#) by [Jay Matternes](#) creator QS:P170,Q16732146 is in the public domain.

Figure 8.4 Paleocene Map with Plesiadapiform Localities original to Explorations: An Open Invitation to Biological Anthropology by Elyssa Ebding at [GeoPlace, California State University, Chico](#) is under a [CC BY-NC 4.0 License](#). Localities based on p. 211 of Fleagle, John G. 2013. Primate Adaptation and Evolution, Third Edition. San Diego, CA: Academic Press.

Figure 8.5 [CarpolestesCL](#) by [Sisyphos23](#) is used under a [CC BY-SA 3.0 License](#).

Figure 8.6 Eocene Map with Adapoid and Omomyoid Localities original to Explorations: An Open Invitation to Biological Anthropology by Elyssa Ebding at [GeoPlace, California State University, Chico](#) is under a [CC BY-NC 4.0 License](#). Localities based on p. 229 of Fleagle, John G. 2013. Primate Adaptation and Evolution, Third Edition. San Diego, CA: Academic Press.

Figure 8.7 Representative crania of adapids (European adapoids) from the [Museum d’Histoire Naturelle Victor Brun in Montauban, France](#) original to Explorations: An Open Invitation to Biological Anthropology by Jonathan M. G. Perry is under a [CC BY-NC 4.0 License](#).



Figure 8.8 [Darwinius masillae holotype slabs](#) by Jens L. Franzen, Philip D. Gingerich, Jörg Habersetzer<sup>1</sup>, Jørn H. Hurum, Wighart von Koenigswald, B. Holly Smith. Originally from Franzen et al. 2009. Complete Primate Skeleton from the Middle Eocene of Messel in Germany: Morphology and Paleobiology. *PLoS ONE* 4(5): e5723. [doi.org/10.1371/journal.pone.0005723](https://doi.org/10.1371/journal.pone.0005723). Used under a [CC BY 2.5 License](#).

Figure 8.9 [Paleogeographic map showing hypothetical migration routes of Teilhardina](#) by Smith et. al. Originally from Smith, Thierry, Kenneth D. Rose, and Philip D. Gingerich. 2006. Rapid Asia–Europe–North America geographic dispersal of earliest Eocene primate *Teilhardina* during the Paleocene–Eocene Thermal Maximum. *Proceedings of the National Academy of Sciences* 103 (30): 11,223–11,227. [doi:10.1073/pnas.0511296103](https://doi.org/10.1073/pnas.0511296103).

Figure 8.10 Oligocene Map with Key Early Anthropoid Localities original to *Explorations: An Open Invitation to Biological Anthropology* by Elyssa Ebding at [GeoPlace, California State University, Chico](#) is under a [CC BY-NC 4.0 License](#). Localities based on p. 265 of Fleagle, John G. 2013. *Primate Adaptation and Evolution*, Third Edition. San Diego, CA: Academic Press.

Figure 8.11 Competing Trees for Anthropoid Origins by Jonathan M. G. Perry is under a [CC BY-NC 4.0 License](#).

Figure 8.12 Egyptian workers sweeping Quarry I in the Fayum Basin (2004) by Jonathan M. G. Perry is under a [CC BY-NC 4.0 License](#).

Figure 8.13 Elwyn Laverne Simons excavating *Aegyptopithecus* in the Fayum Basin used by permission of the [Duke Lemur Center](#), Division of Fossil Primates.

Figure 8.14 Female and male cranium of *A. zeuxis* by Simons, Elwyn L., Erik R. Seiffert, Timothy M. Ryan, and Yousry Attia. Original from Simons, et al. 2007. A remarkable female cranium of the early Oligocene anthropoid *Aegyptopithecus zeuxis* (Catarrhini, Propliopithecidae). *Proceedings of the National Academy of Sciences of the United States of America* 104 (21): 8,731–8,736. [doi.org/10.1073/pnas.0703129104](https://doi.org/10.1073/pnas.0703129104).

Figure 8.15 Cast of the right half of the mandible of *Eosimias centennicus*, type specimen, from K.D. Rose cast collection, photo by Jonathan M. G. Perry is under a [CC BY-NC 4.0 License](#).

Figure 8.16 Casts of representative amphipithecoid material from K.D. Rose cast collection, photo by Jonathan M. G. Perry is under a [CC BY-NC 4.0 License](#).

Figure 8.17 Representative specimens of *Homunculus patagonicus* from K.D. Rose cast collection, photo by Jonathan M. G. Perry is under a [CC BY-NC 4.0 License](#).

Figure 8.18a Cañadon Palos Field Locality in Argentina by Jonathan M. G. Perry is under a [CC BY-NC 4.0 License](#).

Figure 8.18b Swift Current Creek locality, Saskatchewan, Canada by Jonathan M. G. Perry is under a [CC BY-NC 4.0 License](#).

Figure 8.19 Miocene Map with Fossil Ape Localities original to *Explorations: An Open Invitation to Biological Anthropology* by Elyssa Ebding at [GeoPlace, California State University, Chico](#) is under a [CC BY-NC 4.0 License](#). Localities based on p. 311 of Fleagle, John G. 2013. *Primate Adaptation and Evolution*, Third Edition. San Diego, CA: Academic Press.

Figure 8.20 [Range chart for Miocene hominoids of Western Eurasia](#) by Casanovas-Vilar, Isaac, David M. Alba, Miguel Garcés, Josep M. Robles, and Salvador Moyà-Solà. Original from Casanovas-Vilar et al. 2011. Updated chronology for the Miocene hominoid radiation in Western Eurasia. *Proceedings of the National Academy of Sciences* 108 (14): 5,554–5,559.

Figure 8.21 [Victoriapithecus macinnesi skull](#) photo taken at the [Musée d'Histoire Naturelle, Paris](#) by [Ghedoghedo](#) is used under a [CC BY-SA 3.0 License](#).

Figure 8.22 [Gigantopithecus blacki mandible 010112](#) by [Wilson44691](#) is used under a [CC BY-SA 3.0 License](#).

Figure 8.23 [Oreopithecus bambolii 1](#) by [Ghedoghedo](#) is used under a [CC BY-SA 3.0 License](#).